



For Single Axis Actuator LX Series selections, please use our 2D and 3D CAD data and Technical Calculation Software (free of charge).  
[http://download.misumi.jp/mol/fa\\_soft.html](http://download.misumi.jp/mol/fa_soft.html)

# Single Axis Actuators LX15 Standard / Cover Type

Design / Utility Model Registered

<Standard Type>      <Cover Type>

Motor Adapter Plates

**Specifications**

**LX15**

Standard / Cover

Screw Shaft Dia. (mm) 5

Lead (mm) 2

Accuracy High Grade / Precision Grade

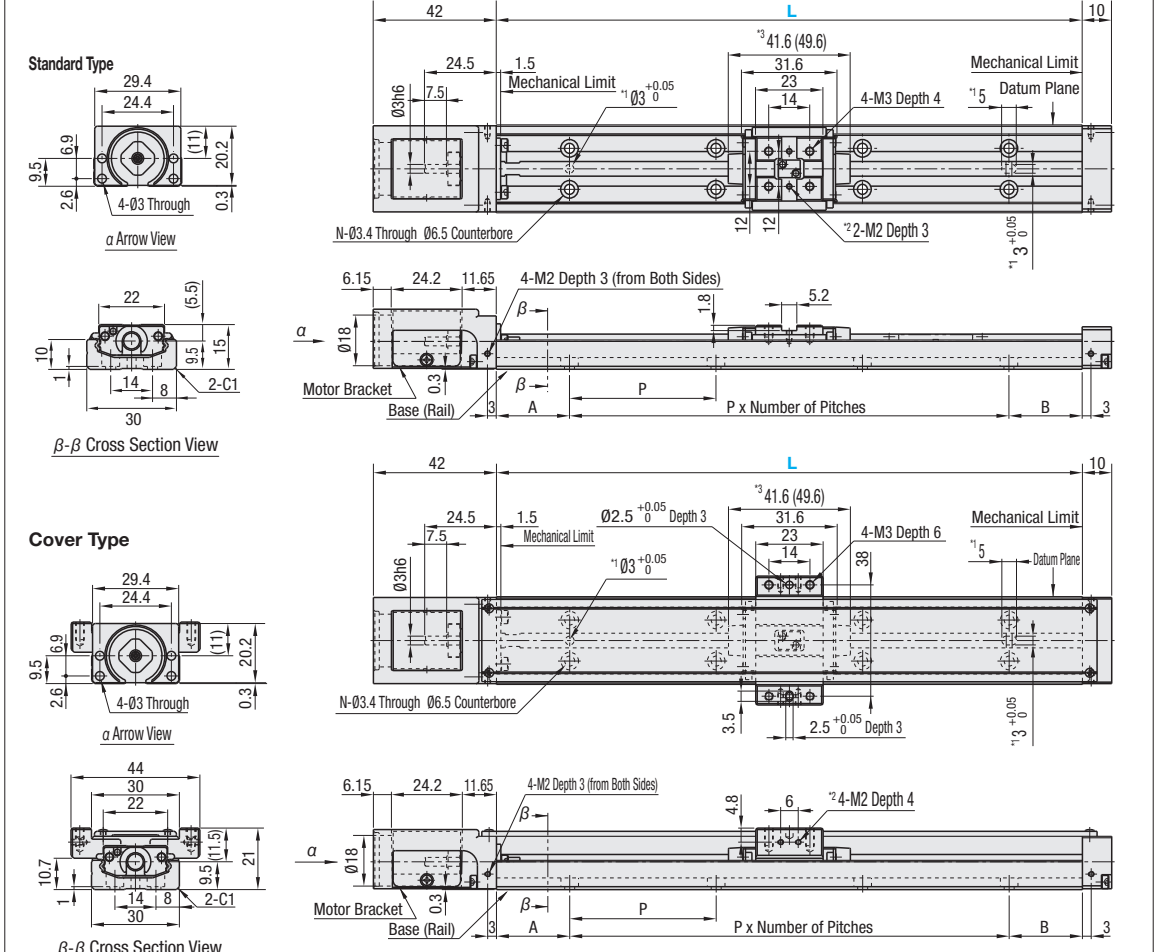
**Accessory**

① Motor Adapter Plate  
 M A5052 S Black Anodize  
 ② Adapter Plate Screw 2 pcs.  
 M SUSXM7

RoHS10    For Material table, see P.411

Part Number	Standard Grease		Low Dust Generation Grease		Lubrication Unit MX-equipped (Standard Grease)	
	High Grade	Precision Grade	High Grade	Precision Grade	High Grade	Precision Grade
Lead 2	LX1502 (C)	LX1502 (C)P	LX1502 (C)G	LX1502 (C)PG	LX1502 (C)-MX	LX1502 (C)P-MX

(C) is for Cover Type.      Low Dust Generation Grease Information P.414      Lubrication Unit MX Information P.408

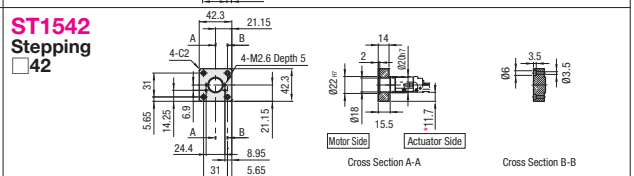
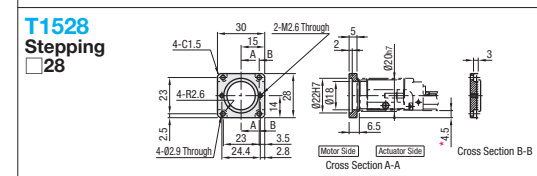
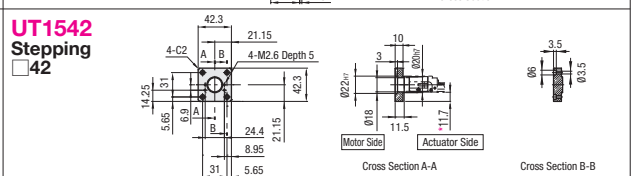
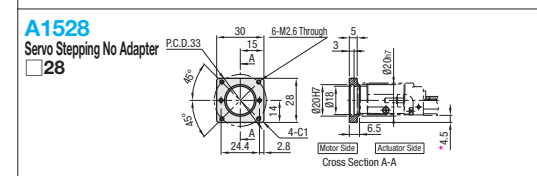
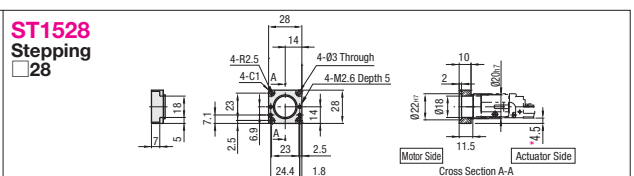
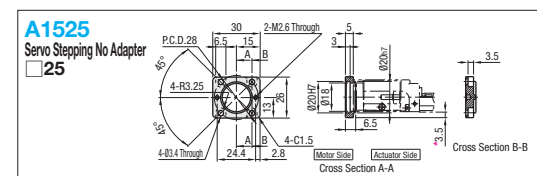


\*1: Dowel Holes for Base Positioning  
 \*2: Tapped Holes for Sensor Flag Mount  
 \*3: Value in ( ) is for Lubrication Unit MX-equipped Type.

Effective stroke is the value with 2.5mm margin on each side from mechanical limits, i.e., 5mm in total.  
 Precision specification value is the value achieved after fixing rails. (It is not a value before tightening the rail screws.) For values, see P.413

Part Number	Block Qty.	Motor Adapter Plates	Base Length (L)	* Effective Stroke		Total Mass (kg)		Mounting Hole Dimensions			
				B1	MX-equipped (B1)	Standard	Cover	A	P	B	Number of Pitches
(Standard Grease) LX1502 (C)	(1 pc.) B1	(Servo Motor) A1525 A1528	75	26.9	-	0.13	0.18	12.5	12.5	1	4
(Low Dust Generation Grease) LX1502 (C)G		(Stepping Motor) T1528	100	51.9	43.9	0.17	0.22	25	25	1	4
(Lubrication Unit MX-equipped, Standard Grease) LX1502 (C)-MX		ST1528	125	76.9	68.9	0.22	0.28	12.5	12.5	2	6
		UT1542	150	101.9	93.9	0.29	0.35	25	25	2	6
		ST1542	175	126.9	118.9	0.35	0.41	12.5	12.5	3	8
		N	200	151.9	143.9	0.38	0.45	25	25	3	8

\* Precision Certificate is enclosed with precision grade products. \* Motor adapter plate and mounting screws are not included with No Adapter Plate Type. \* Effective stroke is indicated in dimensions with a margin of 2.5mm each from the ends. \* 0.002kg will be added to MX-equipped types. \* (C) is for Cover Type.



Note: Note that the Motor Adapter protrudes beyond the rail at \* marked area.

**Accuracy Standards**

Accuracy Standards	High Grade	Precision Grade
Positioning (mm)	0.04	0.02
Backlash (mm)	0.01	0.002
Positioning Repeatability (mm)	±0.004	±0.003
Running Parallelism (mm)	0.02	0.01
Starting Torque (N·cm)	0.8	0.8

For Max. Velocity, see P.413  
 For Moment of Inertia, see P.412

Ordering Example: **Part Number** - **Block Qty.** - **Motor Adapter Plates** - **Base Length (L)**

Example: LX1502-MX - B1 - A1525 - 100

**Servo Motor Application Table**

Part Number	Flange Size	Manufacturer	Wattage
A1525	25	Yasukawa / Mitsubishi Electric Corporation	10W/20W
A1528	28	Mitsubishi Electric Corporation	

**Stepping Motor Application Table**

Part Number	Flange Size	Manufacturer	Type
T1528	28	Oriental Motor	5-phase / α-Step
ST1528	28	NEMA standards	-
UT1542	42		
ST1542	42		

NEMA standards are a set of standards stipulated by National Electrical Manufacturers Association of United States.  
 For details on supported motor types, see P.437  
 Not compatible with geared motors made by Oriental Motor.

**High Grade Unit Price**

Part Number	L						Motor Adapter Plate	Block Qty.	Screw Shaft Dia.	Lead
	L=75	L=100	L=125	L=150	L=175	L=200				
LX1502-B1-□							Servo / Stepping No Adapter Plate	1	5	2
LX1502C-B1-□										

**Specifications Unit Price**

Specifications	Unit Price
Precision Grade	
Low Dust Generation Grease	
Lubrication Unit MX-equipped	
* Listed Price + Unit Price = Product Price	
* Volume Discount Rate is applicable.	

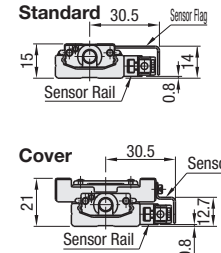
Alterations **Part Number** - **Block Qty.** - **Motor Adapter Plates** - **Base Length (L)** - **(Code)**

Example: LX1502 - B1 - A1525 - 100 - XW1

**Set of Proximity Sensor (SUNX) - Set Part Specification**

LX Part Number	Code (Is Sensor Qty.)	Sensor Qty.		Sensor Rail		Sensor		Sensor Flag		Unit Price (L≤125)			Unit Price (L≥150)			
		GX-F8A (ON when near)	GX-F8B (ON when away)	Rail (1 pc.)	Mounting Screw (Pitch +1 pc.)	Sensor Mounting Screw (1 pc.)	Sensor Flag (1 pc.)	Sensor Flag Mounting Screw (1 pc.)	Sensor Qty.	Sensor Qty.	1 pc.	2 pcs.	3 pcs.	1 pc.	2 pcs.	3 pcs.
LX1502	XA	□ pc(s).	-	-	-	-	-	-	-	-	-	-	-	-	-	-
	XB	-	□ pc(s).	-	-	-	-	-	-	-	-	-	-	-	-	-
	FA	-	-	□ pc(s).	-	-	-	-	-	-	-	-	-	-	-	-
LX1502C	FB	-	-	□ pc(s).	-	-	-	-	-	-	-	-	-	-	-	-
	XW1	1 pc.	1 pc.	Dedicated	Phillips Flat Head Screw M2-4 (2 pcs.)	CSST3-10	Dedicated	Pan Head Screw M2-3 (1 pc.)	-	-	-	-	-	-	-	-
	XW2	2 pcs.	2 pcs.	-	-	-	-	Hex Socket Head Cap Screw M2-4 (2 pcs.)	-	-	-	-	-	-	-	-
LX1502	XW3	2 pcs.	1 pc.	-	-	-	-	Pan Head Screw M2-3 (1 pc.)	-	-	-	-	-	-	-	-
	FW1	1 pc.	1 pc.	-	-	-	-	Hex Socket Head Cap Screw M2-4 (2 pcs.)	-	-	-	-	-	-	-	-
	FW2	1 pc.	2 pcs.	-	-	-	-	-	-	-	-	-	-	-	-	-
LX1502C	FW3	2 pcs.	1 pc.	-	-	-	-	-	-	-	-	-	-	-	-	-

**Proximity Sensor Installation Drawing**



\* Sensors are not sold separately.

The sensor can also be installed on the opposite side.