

High Torque Timing Pulleys - 3GT

Compatible with 1.5GT, 2GT Types from Gates Unitta Asia Company.

For e-Catalog non-standard products, see P.131.

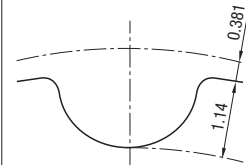
For High Torque Timing Belts, see P.1493. For Idlers with Teeth, see P.1487.



Type	Belt Width			Material*		Surface Treatment	Accessory* Set Screws
	6mm	9mm	15mm	Pulley	Flange		
GPA	●	●	●	Aluminum Alloy	Aluminum Alloy	Clear Anodize	SUS304
GPT	●	●	●	S45C Equivalent	SPCC	-	Chrome Molybdenum Steel (Black Oxide)
GPM	●	●	●	S45C Equivalent	SPCC	Black Oxide	Chrome Molybdenum Steel (Black Oxide)

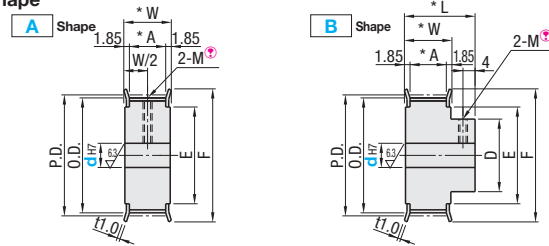
*Flange is already swaged, and set screws are included with for Shaft Bore P and N. *The above material and accessory might be changed to the ones equivalent to the originals.

Standard Tooth Profile



Tooth groove dimensions slightly vary according to the number of teeth. (Pitch: 3.0mm)

Pulley Shape



Tapped Hole Dimensions (Shaft Bore Specs.: P, N)

dh7 Shaft Bore I.D.	M (Coarse)	Accessory Set Screw
5	M3	M3x3
6-17	M4	M4x3
18-38	M5	M5x4

Shaft Bore Specs. H (Round Hole), V or F (Stepped Hole), Y (Both Sides Stepped Hole) and WB (Two-stepped Hole) do not have tapped holes.

For Shape B, 20 or less teeth is not selectable.

Number of Teeth / Dimension

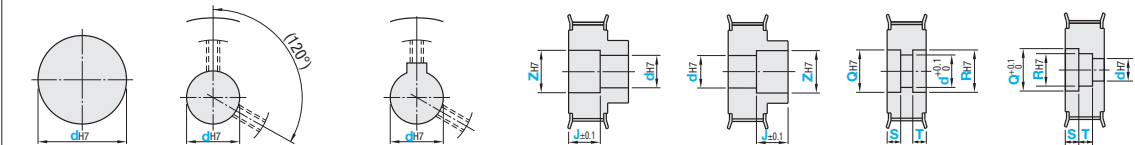
mm	Number of Teeth																
	16	18	20	22	24	25	26	28	30	32	34	36	40	44	48	50	60
P.D.	15.28	17.19	19.10	21.01	22.92	23.87	24.83	26.74	28.65	30.56	32.47	34.38	38.20	42.02	45.84	47.75	57.30
O.D.	14.52	16.43	18.34	20.25	22.16	23.11	24.07	25.98	27.89	29.80	31.71	33.62	37.44	41.26	45.08	46.99	56.54
D	-	-	-	12	14	14	15	17	19	20	22	24	28	30	32	34	36
F	19	21	23	24	26	27	28	30	32	34	36	38	42	46	49	51	61
E	11	12	14	16	18	18	19	21	23	25	27	29	33	36	40	42	52

Belt Nominal Width / Dimension

mm	Nominal		
	GT3060	GT3090	GT3150
A	7.3	10.3	16.3
W	11.0	14.0	20.0
L	19.0	22.0	28.0

Shaft Bore Specs. Select shaft bore spec mark and each dim. from the table below. Surface treatment may not be applied to shaft bores.

H Round Hole P Round Hole + Tap N New JIS Keyway Bore + Tap V Stepped Hole F Stepped Hole Y Both Ends Stepped Hole WB Two-stepped Hole



No tapped holes or set screws. For A-Shape pulley, the screw holes are set at around 120° to keep away from peaks. For Keyway Dimension Details, see P.1413. Specify NK10 when selecting "Shaft Bore Dia. 10" + "Keyway Width 4.0mm (Height 1.8mm)". No tapped holes or set screws. Applicable to Shape B only. No tapped holes or set screws. Applicable to Shape A only. No tapped holes or set screws. Applicable to Shape B only. No tapped holes or set screws.

Part Number	Type	Number of Teeth	Type	Pulley Shape	Shaft Bore Specs. "": 1mm Increments "": Selectable																
					Shaft Bore Specs. "": 1mm Increments "": Selectable						Shaft Bore Specs. "": 1mm Increments "": Selectable										
					H(d) Round Hole	P(d) Round Hole + Tap See Below	N(d) Keyway + Tap See Below	V Stepped Hole	Y Both Sides Stepped Hole	WB Two-stepped Hole	H(d) Round Hole	P(d) Round Hole + Tap See Below	N(d) Keyway + Tap See Below	V Stepped Hole	Y Both Sides Stepped Hole	WB Two-stepped Hole					
Aluminum	GPA	16	A	4-7	-	-	4, 4.5, 5, 6, 7	4, 4.5, 5, 6, 7	-	-	-	-	-	-	-	-	-				
		18		5-8	5	-	5, 6, 7, 8	5, 6, 7, 8	-	-	-	-	-	-	-	-	-	-			
		20		5-10	5, 6	-	5-8, 7-10	5-8, 7-10	-	-	-	-	-	-	-	-	-	-	-		
		22		6-12	6, 6.35, 7	-	6-10, 8-12	6-10, 8-12	-	-	-	-	-	-	-	-	-	-	-		
		24		6-14	6-8	-	6-12, 8-14	6-12, 8-14	-	-	-	-	-	-	-	-	-	-	-		
		25		6-14	6-10	-	6-12, 8-14	6-12, 8-14	-	-	-	-	-	-	-	-	-	-	-		
	Steel	GPT	26	A	6-15	6-11	8	6-13, 8-15	6-13, 8-15	-	-	-	-	-	-	-	-	-	-		
			28		6-17	6-13	8, 10	6-15, 8-17	6-15, 8-17	-	-	-	-	-	-	-	-	-	-		
			30		6-19	6-14	8, 10	6-17, 8-19	6-17, 8-19	-	-	-	-	-	-	-	-	-	-	-	
			32		6-21	6-14	8-12	6-19, 8-21	6-19, 8-21	-	-	-	-	-	-	-	-	-	-	-	
			34		8-23	8-16	8-13	8-21, 10-23	8-21, 10-23	-	-	-	-	-	-	-	-	-	-	-	-
			36		8-25	8-18	8-14	8-23, 10-25	8-23, 10-25	-	-	-	-	-	-	-	-	-	-	-	-
Steel	GPM	40	B	8-29	8-23	8-17	8-27, 10-29	8-27, 10-29	-	-	-	-	-	-	-	-	-	-			
		44		10-32	10-25	10-20	10-30, 12-32	10-30, 12-32	-	-	-	-	-	-	-	-	-	-			
		48		10-36	10-25	10-23	10-34, 12-36	10-34, 12-36	-	-	-	-	-	-	-	-	-	-	-		
		50		10-38	10-28	10-24	10-36, 12-38	10-36, 12-38	-	-	-	-	-	-	-	-	-	-	-	-	
		55		10-42	10-32	10-28	10-40, 12-42	10-40, 12-42	-	-	-	-	-	-	-	-	-	-	-	-	
		60		12-48	12-38	12-30	12-46, 14-48	12-46, 14-48	-	-	-	-	-	-	-	-	-	-	-	-	

Shaft Bore Dia. 9 is not available for Shaft Bore Specs. N.

Shaft Bore Dia. 4.5 and 6.35 are selectable for Shaft Bore Specs. H, P, V and F.

Ordering Example (Shaft Bore Specs.: H, P, N) GPA30GT3060 - A - H10
 (Shaft Bore Specs.: V, F) GPA40GT3150 - B - V12 - Z14 - J18.0
 (Shaft Bore Specs.: Y, WB) GPA36GT3090 - A - Y15 - Q18 - R20 - S3 - T4

Number of Teeth	Body Price									Shaft Bore Machining Charge (Body Price +)		
	Aluminum Alloy (Clear Anodize)			S45C Equivalent			S45C Equivalent (Black Oxide)					
	GT3060	GT3090	GT3150	GT3060	GT3090	GT3150	GT3060	GT3090	GT3150	P Hole	N, V, F Hole	Y, WB Hole
16												
18												
20												
22												
24												
25												
26												
28												
30												
32												
34												
36												
40												
44												
48												
50												
60												

Alterations Part Number - Pulley Shape - Shaft Bore Specs., I.D. - Z - J - Q - R - S - T - (KC90...etc.) - FC30.0
 GPA30GT3090 - A - H10 - Z - J - Q - R - S - T - (KC90...etc.) - FC30.0

Alterations	Set Screw Angle	Flange Not Swaged	Flange Swaged on One Side	Flange Cut	Hub Shortening
Code	KC90	NFC	RFC, LFC	FC	BC
Spec.	Changes an angle of set screw to 90°. For A-Shape pulley, the screw holes are set at around 90° to keep away from peaks.	(Flange 2 pcs. Included) Ordering Code: NFC	(Flange 1 pc. Included) Ordering Code: RFC RFC LFC	Cut the flange O.D. in 0.5mm increment. Ordering Code: FC17 Application Notes: FC>(O.D.)+1 FC<F-2 No surface treatment is applied on flange circumference.	Cuts the hub length in 0.5mm increment. Ordering Code: BC6.5 Application Notes: Shaft Bore Specs. H, V, F: 3<BC<L-W Shaft Bore Specs. P, N: M+3<BC<L-W Not available for Shape A.

Alterations	Add Side Holes Conditions may vary depending on the shaft bore specs. P.1414		
Code	Side Tapped Hole	Side Through Hole	Side Counterbored
Code	QTC, QFC, QSC	KTC, KFC, KSC	ZTC, ZFC, ZSC
Spec.	Machines tapped hole on the side surface of hub side. Ordering Code: QTC28-M4 IC Selection Specify the hole position (P. C. D. dim.). M Selection M3, M4, M5, M6, M8 Application Notes: Minimum Thickness: 2mm Formula P.1414 Conditions may vary depending on the shaft bore specs. P.1414	Machines through hole on the side surface. Ordering Code: KTC28-K4.5 IC Selection Specify the hole position (P. C. D. dim.). K Selection K4.0 ~ 13.0 (0.5mm Increments) Application Notes: Minimum Thickness: 2mm Formula P.1414 Conditions may vary depending on the shaft bore specs. P.1414	Machines counterbored hole on the side surface. Ordering Code: ZTC28-Z4 IC Selection Specify the hole position (P. C. D. dim.). Z Selection ZM3, ZM4, ZM5, ZM6, ZM8 Application Notes: Minimum Thickness: 2mm Formula P.1414 Conditions may vary depending on the shaft bore specs. P.1414

For details, see Shaft Alteration Overview. P.1414