

Dear our valued customer,



[Prior Notification]

End of Sale Notification for Carbon Steel Miniature Linear Guide Products of MISUMI

Thank you for your order and your support. It is greatly appreciated. We wish you continued success and prosperity.

We would like to make a prior notification for end of sale in 2021 for the products below.

Our apology to the inconvenience caused. We hope that you would consider switching to the replacement products.

Should you need any further information, please feel free to contact us.

1. End of Sale Product

Miniature Linear Guide Material: Carbon Steel, SEB, Others. Please refer to following product list here :

https://id.misumi-ec.com/news/topics/List_Produk_dan_Alternatif_MiniatureLinearGuideMISUMI.zip

2. End Of Sale Date

At the end of 2021 year.

3. Replacement Product

Miniature Linear Guide Material: Stainless Steel, SSEB, Others. Please refer to following product list here

https://id.misumi-ec.com/news/topics/List_Produk_dan_Alternatif_MiniatureLinearGuideMISUMI.zip

4. Modification in Specification of Replacement Product

There is no modification in Dimension of Product.

Modification in Material, from Carbon Steel to Stainless Steel (Equivalent to SUS440C), is the only change.

Please see below sheet No.1 for details.

5. Contact

Our Technical Support ready to support.

Technical Support MISUMI Indonesia, FA VONA Business Department

TEL : 021-2918-1730

E-Mail : tech-support.fv@misumi.co.id

Sheet No.1

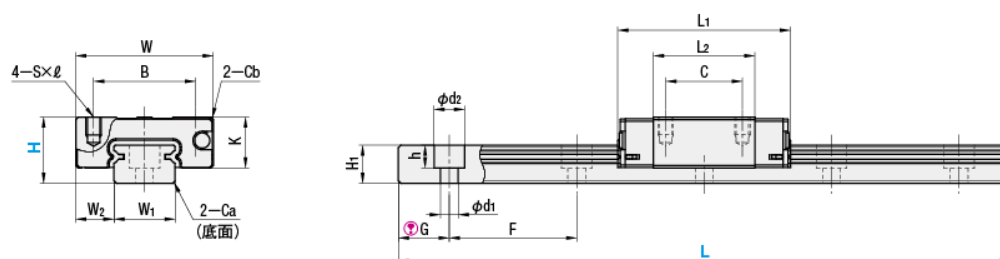
Material Modification, from Carbon Steel to Stainless Steel, of Miniature Linear Guides

Misumi Group Inc. has decided End of Sale date in 2021 for Carbon Steel-Miniature Linear Guides. Our apology for the inconvenience. We hope that you would consider switching to Stainless Steel Miniature Linear Guides. Please check the information below for Comparisons and Modification of Model Number.

1. Replacement Product – Modification in Specification

Material will be modified from Carbon Steel to Stainless Steel. There is no modification in Specification, Allowable Load Capacity, Allowable Moment, Standard Accuracy, and the others.

For instance: S(S)EB10-55 Example of Specification Comparison



Dimension		W	L ₁	B	C	S×ℓ	L ₂	K	W ₁	W ₂	H ₁	d ₁ ×d ₂ ×h	F	G
Carbon Steel	(SEB10-55)	20	30	15	10	M3×3	19	7.8	9	5.5	5.5	3.5×6×3.5	20	7.5
Stainless Steel	(SSEB10-55)	20	30	15	10	M3×3	19	7.8	9	5.5	5.5	3.5×6×3.5	20	7.5

Allowable Load Capacity and Allowable Moment	Basic Load Capacity		Allowable Static Moment		
	C (Dynamic) kN	Co (Static) kN	M _A N·m	M _B N·m	M _C N·m
Carbon Steel (SEB10-55)	1.5	2.5	5.1	5.1	10.2
Stainless Steel (SSEB10-55)	1.5	2.5	5.1	5.1	10.2

2. Modification in Model Number of Replacement Product

In order to modify Model No. to Stainless Steel Product, please add a [S] to the top of Carbon Steel Products model No. For Low temperature black chrome plating product, please add a [S] next to [R].

(1) Normal product

[Carbon Steel] S E B 10 - 55 ⇒ [Stainless Steel] S S E B 10 - 55

(2) Low temperature black chrome plating product

[Carbon steel] R E B 10 - 55 ⇒ [Stainless Steel] R S E B 10 - 55