

Hoses for Food

-Standard / Vacuum-

Hoses for Food

Type			Material		
Hose Only	One End Swaged	Both Ends Swaged	Main Material	Reinforcement	Swaging Parts
HOFW	HOFWK	HOFWR	Polyvinyl Chloride	Polyester Yarn	Joint Nipples:SUS316L Joint Covers:SUS304
HOGFW	HOGFKW	HOGFWR	Polyvinyl Chloride	PET	

Hose Body Hose Length

One End Swaged Hose Length (Swaging Metal Included)

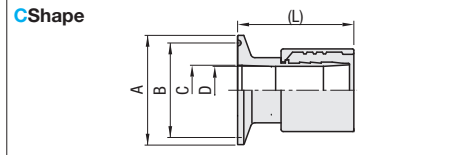
Both Ends Swaged Hose Length (Swaging Metal Included)

Structure

HOFW
(Standard Type)

HOGFW
(Vacuum Type)

Swage Fitting Shapes



Hose Nominal Inner Dia.	C Shape				
	A	B	C	D	(L)
1S	50.5	43.5	23.0	21.0	56.0
1.5S	50.5	43.5	35.7	33.0	73.0
2S	64.0	56.5	47.8	45.0	75.0

Hose Specifications

No.	HOFW HOFW					
	Inner Diameter (mm)	Outer Diameter (mm)	Thickness (mm)	Min. Bending Radius (mm)	Operating Pressure MPa	Operation Temperature Range °C
6	6	11	2.5	30	0~1.0	-5~70
9	9	15	3	45	0~1.0	
12	12	18	3	65	0~0.8	
15	15	22	3.5	95	0~0.8	
19	19	26	3.5	120	0~0.6	
1S	25	33	4	165	0~0.6	
1.5S	38	48	5	300	0~0.4	
2S	50	62	6	440	0~0.3	

No.	HOGFW HOGFW					
	Inner Diameter (mm)	Outer Diameter (mm)	Thickness (mm)	Min. Bending Radius (mm)	Operating Pressure Mpa 50°C	Operating Pressure Mpa 70°C
15	15	22	3.5	60	-0.1~0.4	-0.1~0.3
19	19	26	3.5	80	-0.1~0.4	-0.1~0.3
1S	25.4	33.4	4	100	-0.1~0.4	-0.1~0.3
1.5S	38	48	5	150	-0.1~0.3	-0.1~0.2
2S	50.8	62.8	6	200	-0.1~0.3	-0.1~0.2

Part Number	Type	Hose Nominal Inner Dia.	Hose Length 0.1m Increment	L	
				Left End Swaged	Right End Swaged
HOFW HOFWK HOFWR	(Hose Only) (One End Swaged) (Both Ends Swaged)	6	0.5~100.0	-	-
		9			
		12			
		15			
		19			
		1S			
HOGFW HOGFKW HOGFWR	(Hose Only) (One End Swaged) (Both Ends Swaged)	1.5S	0.6~50.0	LC	RC
		2S			
		15			
		19			
		1S			
		1.5S			
HOGFW HOGFKW HOGFWR	(Hose Only) (One End Swaged) (Both Ends Swaged)	2S	0.6~40.0	LC	RC
		15			
		19			

Order Example

Part Number - Hose Length - Shape L - Shape R

HOFW6 - 1.5

HOFWK1.5S - 2.0 - LC

HOFWR2S - 1.0 - LC - RC

Features of HOFW

- Available in high temperature up to 70°C.
- Superior in flexibility.
- Excels in transparency and enables the transferred materials to be observed.
- Conforms to Food Sanitation Laws.

Features of HOGFW

- Available in high temperature up to 70°C.
- Resistant to deformation and excels in shape-retaining property.
- Excels in transparency and enables the transferred materials to be observed.
- Conforms to Food Sanitation Laws.

CAUTION

- Cleanse inside the hose.
- Do not soak the hoses or joints in drinking water, food or fluids. Fluid may remain behind the joint and unwanted bacteria may adhere to it.

Silicone Hose

-Standard / Vacuum-

Silicone Hose

Type			Material		
Hose Only	One End Swaged	Both Ends Swaged	Main Material	Reinforcement	Swaging Parts
HOSSW	HOSSWK	HOSSWR	Silicone Rubber	Polyester Yarn	Joint Nipples:SUS304 Joint Covers:Aluminum
SNHT	SNHTK	SNHTR	Silicone Rubber	Polyester Yarn+SUS304 Coil	Joint Nipples:SUS316L Joint Covers:SUS304

Hose Body Hose Length

One End Swaged Hose Length (Swaging Metal Included)

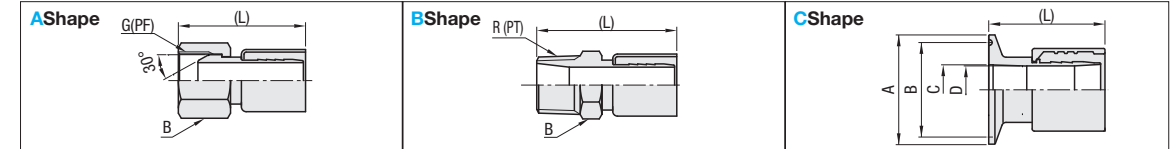
Both Ends Swaged Hose Length (Swaging Metal Included)

Structure

HOSSW
(Standard Type)

SNHT
(Vacuum Type)

Swage Fitting Shapes



Swage Fitting Shapes

Hose Nominal Inner Dia.	R (PT) G (PF)	A Shape		B Shape		C Shape					
		B (Width Across Flats)	(L)	B (Width Across Flats)	(L)	A	B	C	D	(L)	
6	1/4	14	43	17	37	1S	50.5	43.5	23	22	56
9	3/8	17	47	19	43	1.5S	50.5	43.5	35.7	34	73
12	1/2	22	53	24	49	2S	64	56.5	47.8	46	75
19	3/4	27	65	30	59						

Hose Specifications

No.	HOSSW HOSSW					
	Inner Diameter (mm)	Outer Diameter (mm)	Thickness (mm)	Min. Bending Radius (mm)	Operating Pressure MPa	Operation Temperature Range
6	6.3	12.3	3	80	0~1.0	-30~150
9	9.5	16	3.25	100	0~1.0	
12	12.7	19.5	3.4	130	0~0.5	
19	19.0	28	4.5	180	0~0.5	
1S	25.4	35.5	5.05	220	0~0.5	
1.5S	38.1	50.5	6.2	310	0~0.5	
2S	50.8	64.5	6.85	550	0~0.3	

No.	SNHT SNHT					
	Inner Diameter (mm)	Outer Diameter (mm)	Thickness (mm)	Min. Bending Radius (mm)	Operating Pressure MPa	Operation Temperature Range
1S	25.4	35.5	5.05	180	-0.1~0.7	-30~150
1.5S	38.1	50.5	6.2	280	-0.1~0.7	
2S	50.8	64.5	6.85	390	-0.1~0.3	

Part Number	Type	Hose Nominal Inner Dia.	Hose Length 0.1m Increment	L	
				Left End Swaged	Right End Swaged
HOSSW HOSSWK HOSSWR	(Hose Only) (One End Swaged) (Both Ends Swaged)	6	0.3~20.0	LA	RA
		9			
		12			
		19			
		1S			
		1.5S			
SNHT SNHTK SNHTR	(Hose Only) (One End Swaged) (Both Ends Swaged)	2S	0.6~5.0	LC	RC
		15			
		1.5S			

Order Example

Part Number - Hose Length - Shape L - Shape R

HOSSW6 - 1.5

HOSSWK1.5S - 2.0 - LC

SNHTR2S - 1.0 - LC - RC

Feature of HOSSW

- The spirally knitted pressure-resistant reinforcement wire prevents burst due to wire failure near couplings.
- Semi-transparent wall enabling the transfer of materials to be observed
- Excellent in cold resistance and heat resistance.
- Conforms to Food Sanitation Laws.
- FDA compliant.

Features of SNHT

- Provides high level of deformation resistance to enable force-feed and vacuum.
- Semi-transparent wall enabling the transfer of materials to be observed
- Excellent in cold resistance and heat resistance.
- Conforms to Food Sanitation Laws.
- FDA compliant.

CAUTION

- Avoid use with non-polar organic solvents (benzene, toluene, hexane etc.), halogenated hydrocarbon (methylene chloride, trichloroethane etc.), strongly acid condensed agent, strong alkali solution, mineral oil, steam (long-time use) or animal and vegetable oil at 70°C or warmer.
- Cleanse inside the hose before using with drinking water or food.
- For food plumbing, metal shape C is recommended for its safety in sanitary respect.
- At steam cleansing, apply saturated steam at 0.2MPa or lower for a short time.
- Do not soak hoses or joints in drinking water, food, or fluids.
- Fluid may remain behind the joint and unwanted bacteria may adhere to it.