

Housing Units

Wide Blocks - Single / Medium

= For customers using industry standard products =
 The part enclosed in the red frame is as per industry standard specifications (Outer cylinder SUJ2 equivalent, Retainer resin). Consider these specifications while selecting the product.

Features: A design that reduces linear bushing assembly steps. Four mounting holes enable solid mounting with the load.

Industry Standard

Single

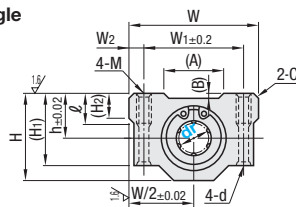


Medium

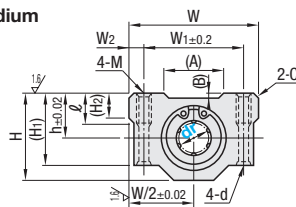


Type		Linear Bushing Used		Housing		Ambient Operating Temp.
Single	Medium	(P315)	(P317)	Material	Surface Treatment	
LHBB	LHBB	LMU	LMUD	Aluminum Alloy	Clear Anodize	-20~ 80°C
LHBBF	LHBBF	LMUF	-	-	-	-20~110°C

Single



Medium



Features of Medium Type Bushings
 Body length is approximately 1.4 times of single type and allowable moment is approximately 4.3 times: suitable where there is no enough space for double type.

6.3 / (1.6 /)
 (Housing)

dr	Tolerance		L		L1		h	H	(H1)	(H2)	W	W1	W2	M	d	l	(A)	(B)	C		
	Single	Medium	Single	Medium	Single	Medium															
(5)	-0.008	-	18	12	-	-	7	14	11	-	22	16	3	M3	-	-	-	-	-	0.5 or less	
6	0	0	25	35	15	24	9	18	15	6	30	20	5	M4	3.4	8	12	0.4	15.5	1 or less	
8			30	43	18	28	11	22	18		34	24									
10			35	53	21	34	13	26	21		40	28					6				
12			36	53	26	38	15	28	24		42	30.5					5.75				
13	-0.009	-0.010	39	54	26	30	24.5	8	44	33	5.5	7	M5	4.3	12	19	0.85	17.5	1.5 or less		
16			44	63		34	48		19	38.5	32.5					9				50	36
20			50	73		40	56		21	41	35					11				54	40
25			67	93		50	66		26	51.5	42					12				76	54
30	-0.010	-0.012	72	100	58	70	30	59.5	49	15	78	58	10	M8	7	18	39.9	0.75	53		
(35)			80	-	60	-	34	68	54	18	90	70									
(40)			90	-	60	-	40	78	62	20	102	80									
(50)			110	-	80	-	52	102	80	25	122	100									
																				2 or less	

For Precautions for Use, see P303. dr5 appearance will be different from the drawings above. dr () are available for Single Type only.
 The datum surface is located on the other side of product ID label.

Housing Units

Wide Blocks - Double / Medium Long / Long

= For customers using industry standard products =
 The part enclosed in the red frame is as per industry standard specifications (Outer cylinder SUJ2 equivalent, Retainer resin). Consider these specifications while selecting the product.

Features: A design that reduces linear bushing assembly steps. Four mounting holes enable solid mounting with the load.

Industry Standard

Double



Medium Long

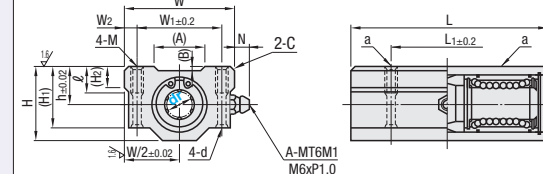


Long

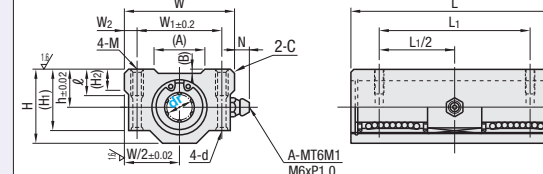


Type			Linear Bushing Used	Housing		Ambient Operating Temp.
Double	Medium Long	Long	(P315)	Material	Surface Treatment	
LHBBW	LHBS	LHBL	LMU	Aluminum Alloy	Clear Anodize	-20~ 80°C
LHBBWF	-	-	LMUF	-	-	-20~110°C

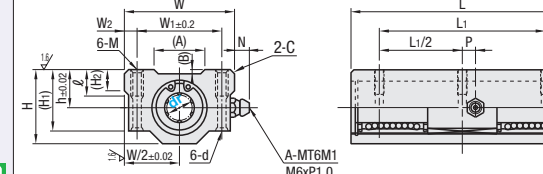
Double



Medium Long



Long



Features of Double Type
 Body length is approximately 1.9 times of the type and allowable moment is approximately 6 times.

Features of Medium Long Type
 Body length is approximately 2.2 times of single type and allowable moment is approximately 10 times; suitable where no space for long type is available.

Features of Long Type
 Body length is approximately 2.7 times of the single type. Allowable moment is approximately 21 times.

6.3 / (1.6 /)
 (Housing)

dr	Tolerance			L			L1			h	H	(H1)	(H2)	W	W1	W2	M	d	l	(A)	(B)	N	P	C	
	Double	Medium Long	Long	Double	Medium Long	Long	Double	Medium Long	Long																
(5)	-0.008	-	-	-	-	-	25	-	-	7	14	11	-	22	16	3	M3	-	-	-	-	-	-	0.5	
(6)	0	-	-	-	-	-	-	-	-	13	22	18	6	30	20	5	M4	3.4	8	12	0.4	7.5	-	-	
(8)																				16					
(10)																				15.5					
(12)																				17.5					
13	-0.010	0	-	-	-	-	-	-	15	28	24	8	42	30.5	5.75	M5	4.3	12	19	0.85	7	7	1.5		
16																			19.8						
20																			21						
25																			36						
30	-0.012	-0.015	-	-	-	-	-	-	30	59.5	49	15	78	58	10	M6	5.2	18	39.9	0.75	6.5	8	1.5		
(35)																			53						
(40)																			53						
(50)																			61						

For Precautions for Use, see P303. dr () is only available for Double Type, only sizes with * are available for Medium Long Type. dr5 appearance will be different from the drawings above.
 Grease fitting is not available on Double Type dr5. There will be dowel holes on "a" locations for dr50. The datum surface is located on the other side of product ID label.

Part Number	Unit Price		
	Single	Medium	Long
(Single) LHBB	LHBB	LHBBF	LHBB
(Medium) LHBB	LHBB	LHBBF	LHBB

dr	Basic Load Rating				Allowable Static Moment (N·m)		Mass (g)	
	C (Dynamic) N	Co (Static) N	Single	Medium	Single	Medium	Single	Medium
5	167	-	206	-	-	-	14	-
6	206	226	265	310	-	1.42	34	48
8	265	310	380	452	-	2.12	52	78
10	372	508	549	718	-	4.37	92	142
12	412	634	598	814	-	6.2	102	144
13	510	640	784	826	-	6.2	120	172
16	775	1164	1180	1448	-	13.1	220	323
20	882	1554	1370	2068	-	18.3	255	382
25	980	1725	1570	3068	-	25.3	600	866
30	1570	2440	2740	3974	-	42.7	735	1061
35	1670	-	3140	-	-	-	1100	-
40	2160	-	4020	-	-	-	1590	-
50	3820	-	7940	-	-	-	3340	-

kgf=Nx0.101972

Part Number	Unit Price			
	Double	Medium Long	Long	Long
(Double) LHBBW	LHBBW	LHBBWF	LHBS	LHBL
(Medium Long) LHBS	LHBS	LHBS	LHBS	LHBS
(Long) LHBL	LHBL	LHBL	LHBL	LHBL

dr	Basic Load Rating				Allowable Static Moment (N·m)		Mass (g)	
	C (Dynamic) N	Co (Static) N	Single	Medium	Single	Medium	Single	Medium
5	263	-	412	-	1.38	-	27	-
6	324	-	529	-	2.18	-	63	-
8	431	-	784	-	4.31	-	102	-
10	588	588	1100	1100	7.24	-	180	241
12	657	-	1200	-	10.9	12.0	205	289
13	813	-	1570	-	11.6	-	240	324
16	1230	1230	2350	2350	19.7	25.5	400	527
20	1400	1400	2740	2740	26.8	35.0	570	682
25	1560	1560	3140	3140	43.4	63.1	1200	1586
30	2490	2490	5490	5490	82.8	106	297	1960
35	2650	-	6270	-	110	-	373	2200
40	3430	-	8040	-	147	-	553	3200
50	6080	-	15900	-	397	-	6700	-

kgf=Nx0.101972

Ordering Example
 Part Number

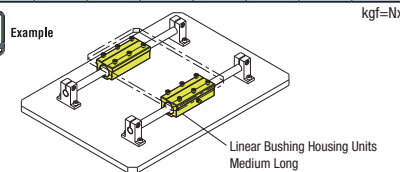
- LHBB12 (L Type Greased)
- LHBB16 (G Type Greased)
- LHBB12L (L Type Greased)
- LHBB16G (G Type Greased)
- LHBB20H (H Type Greased)

Alternative grease types available.
 For Days to Ship, Price and Performance, see P304

Ordering Example
 Part Number
 LHBBW12 (L Type Greased)
 LHBBW12L (G Type Greased)
 LHBBW16G (H Type Greased)
 LHBL20H (H Type Greased)

Alternative grease types available.
 For Days to Ship, Price and Performance, see P304

Example



Linear Bushing Housing Units
 Medium Long