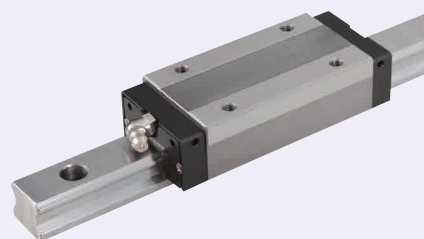


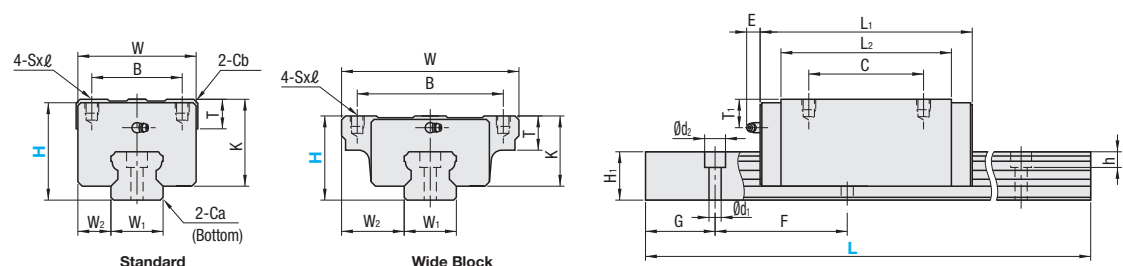
Similar Products Comparison Points

Select C-VALUE Products for medium-accuracy positioning, medium/low load, and medium-to-low frequency drive applications. When you consider using C-VALUE Products, select an appropriate model after comparing the specifications with those of the existing products. P.585



RoHS 10

The mounting dimensions are same for the existing and C-VALUE Products.



For L Configurable, G dimensions differ from those shown in the table below. For details, see P. 531.

Precautions for Use

- This product is All Ball Type. Blocks are equipped with retainers to prevent balls from derailing. For how to handle the blocks, see P. 525.
- For interchangeable, Light Preload Type, rails and blocks can be interchanged.
- Straight grooves are provided on datum planes. Be sure to match the datum lines when using.
- Rails cannot be connected end to end.
- The accuracy of Linear Guides is guaranteed after mounting the rail (after fastening screws on the rail and pushing it onto the datum plane).
- Minor bending of the rail will be adjusted after being mounted and will not affect the performance.

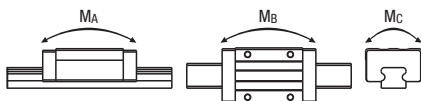
Others

- Filled with Lithium soap based grease (Alvania Grease S2 by Showa Shell Sekiyu K.K.).
- Grease Fittings: Straight Type for H24 and Angled Type for products whose H is other than 24.
- Grease Fitting is screw-in type, and thus, can be repositioned.
- For installation and maintenance of Linear Guides, see P. 529.

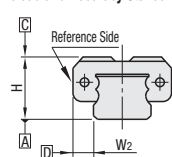
	Part Number		H	L	Block Dimension										Guide Rail Dimension									
	Type				W	L ₁	B	C	Sxℓ	L ₂	K	T	Cb	Grease Fitting			H ₁	W ₁	W ₂	Ca	Counterbored Hole d1xd2xh	F	G	
	1 block	2 blocks												Mounting Hole	E	T ₁								
Standard	C-SER C-SERL	C-SE2R C-SE2RL	30	160-1960 (220)	44	98	32	50	M5x5	78	25.4	8.2	0.5	M4x0.7	14	6.5	16.5	20	12	0.5	6x9.5x8.5	60	20	
			40	160-1960 (220)	48	109	35	50	M6x6.5	88	34.2	12.15	1.0	M6x1	14	11.5	20	23	12.5	0.9	7x11x9	60	20	
			45	200-1960 (280)	60	131	40	60	M8x10	105	38	11	1.0	M6x1	14	11	23	28	16	1.0	9x14x12	80	20	
Wide Block	C-SEWT C-SEWTL	C-SE2WT C-SE2WTL	30	160-1960 (220)	63	98	53	40	M6x10	78	25.4	10	-	M6x1	14	6.5	16.5	20	21.5	0.5	6x9.5x8.5	60	20	
			36	160-1960 (220)	70	109	57	45	M8x12	88	30.2	12	-	M6x1	14	7.5	20	23	23.5	0.9	7x11x9	60	20	
			42	200-1960 (280)	90	131	72	52	M10x15	105	35	15	-	M6x1	14	8	23	28	31	1.0	9x14x12	80	20	

kgf=N×0.10972

H	Basic Load Rating		Allowable Static Moment			Mass		
	C (Dynamic)	Co	MA	Mb	Mc	Block		Guide Rail
	kN	kN	N·m	N·m	N·m	Standard	Wide	kg/m
30	11.3	24.8	260.7	260.7	263.3	0.38	0.53	2.28
36 40	14.8	31.9	380.2	380.2	388.9	0.68	0.78	3.17
42 45	21.8	45.7	654.1	654.1	672.9	1.12	1.77	4.54



Preload and Accuracy Standards



Interchangeable, Light Preload Type

Radial Clearance (μm)	
H24 H30	-5~+5
H36 H40	-6~+6
H42 H45	-7~+7

Dimensional Accuracy (μm)	
Height H Tolerance	±120
Variation of Height H	40
Width W ₂ Tolerance	±120
Variation of Width W ₂	40
Running Parallelism of Plane C against Plane A	See P. 525
Running Parallelism of Plane D against Plane B	See P. 525

Similar Product Page P.585

Ordering Example

Part Number	L
C-SER30	880
C-SEWT30	880

Alterations

Part Number	L	(B3)
C-SER30	1840	B3

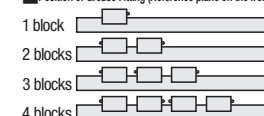
Alterations	Code	Spec.
3-Block Specifications	B3	Add 2 blocks to 1-block product to ship as 3-block separate item. Selection Example: C-SER30-400-B3
4-Block Specifications	B4	Add 3 blocks to 1-block product to ship as 4-block separate item. Selection Example: C-SER30-460-B4

L Dimension Configurable Type (10mm Increment)

H	Unit Price			
	1 block		2 blocks	
	C-SERL	C-SEWTL	C-SE2RL	C-SE2WTL
30	-	-	-	-
36	-	-	-	-
40	-	-	-	-
42	-	-	-	-
45	-	-	-	-

For calculation of L Dimension Configurable Type (10mm increment), add the above amount to the unit price of the Selectable Type longer than, and closest to this L Dimension Configurable Type.

Position of Grease Fitting (Reference plane on the front side)



Selectable Shortest Rail Length for B3/B4

H	B3 (3-block)	B4 (4-block)
30	400	460
36, 40	460	580
42, 45	520	600

Additional Block Price

H	Unit Price			
	B3		B4	
	C-SER	C-SEWT	C-SER	C-SEWT
30	-	-	-	-
36	-	-	-	-
40	-	-	-	-
42	-	-	-	-
45	-	-	-	-

L	Unit Price			
	1 block		2 blocks	
	C-SER	C-SEWT	C-SE2R	C-SE2WT
160	-	-	-	-
220	-	-	-	-
280	-	-	-	-
340	-	-	-	-
400	-	-	-	-
460	-	-	-	-
520	-	-	-	-
580	-	-	-	-
640	-	-	-	-
700	-	-	-	-
760	-	-	-	-
820	-	-	-	-
880	-	-	-	-
940	-	-	-	-
1000	-	-	-	-
1060	-	-	-	-
1120	-	-	-	-
1180	-	-	-	-
1240	-	-	-	-
1300	-	-	-	-
1360	-	-	-	-
1420	-	-	-	-
1480	-	-	-	-
1540	-	-	-	-
1600	-	-	-	-
1660	-	-	-	-
1720	-	-	-	-
1780	-	-	-	-
1840	-	-	-	-
1900	-	-	-	-
1960	-	-	-	-
2000	-	-	-	-
280	-	-	-	-
360	-	-	-	-
440	-	-	-	-
520	-	-	-	-
600	-	-	-	-
680	-	-	-	-
760	-	-	-	-
840	-	-	-	-
920	-	-	-	-
1000	-	-	-	-
1080	-	-	-	-
1160	-	-	-	-
1240	-	-	-	-
1320	-	-	-	-
1400	-	-	-	-
1480	-	-	-	-
1560	-	-	-	-
1640	-	-	-	-
1720	-	-	-	-
1800	-	-	-	-
1880	-	-	-	-
1960	-	-	-	-

36 (C-SEWT)
40 (C-SER)

42 (C-SEWT)
45 (C-SER)