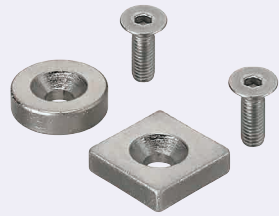


Magnet

Countersunk

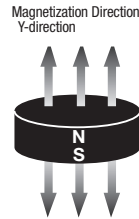
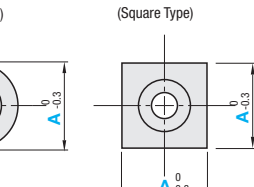
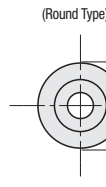
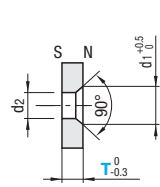
Powerful magnets. May crack when pulled and struck by other magnetic substances. Please handle with care in unpacking.

Countersunk



RoHS 10

Type		Material	Heat Resistant Temperature	Surface Treatment
Round	Square			
NHXCC	NHXCS	Neodymium Magnet	80°C	Nickel Plating
NHXCCCH	NHXCSH	Heat-resistant Neodymium Magnets	150°C	



A Accessory: Flat Head Screw 1 pc. (SUS304 Equivalent)

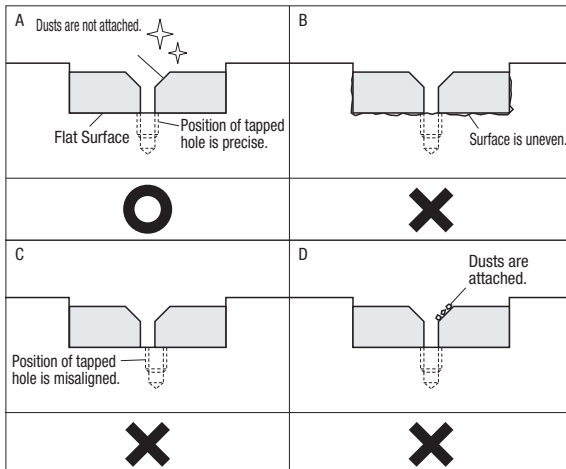
Part Number	Type	A	T	d1	d2	Accessory:	Attraction Force N {kgf}				Surface Magnetic Flux Density Gauss {G}				Unit Price				
							NHXCC	NHXCS	NHXCCCH	NHXCSH	NHXCC	NHXCS	NHXCCCH	NHXCSH	NHXCC	NHXCCCH	NHXCS	NHXCSH	
(Round Type) NHXCC NHXCCCH	8	2	3	5.5	3.0	M2.5-6	7.8 {0.8}	10.8 {1.1}	2000~2500	3000~3400									
							10.8 {1.1}	16.6 {1.7}	2400~2800	3200~3600									
	10	3	6.5	3.5	M3-8	14.7 {1.5}	22.5 {2.3}	3500~4000	3000~3300										
						18.6 {1.9}	24.5 {2.5}	4000~4200	3800~4000										
(Square Type) NHXCS NHXCSH	12	4	4.5	6.5	3.5	M3-8	18.6 {1.9}	-	3600~4000	-									
							23.5 {2.4}	27.4 {2.8}	4100~4300	3900~4100									
	15	3	5	9	4.8	M4-10	23.5 {2.4}	-	3800~4200	-									
							41.1 {4.2}	54.8 {5.6}	4200~4500	4000~4300									
20	4	5	11	5.8	M5-12	49 {5.0}	-	3800~4100	-										
						54.8 {5.6}	78.4 {8.0}	4200~4400	4000~4200										
25	4	6	13	7.0	M6-15	58.8 {6.0}	-	3700~4100	-										
						78.4 {8.0}	98.0 {10.0}	4100~4400	3900~4300										

Attraction Force and Surface Flux Density are reference values for magnets alone.

Ordering Example	Part Number	-	T
	NHXCC8	-	3

Installation Precautions

- Place a magnet on flat surface. (Illustration B)
- Please make sure that there is no misalignment between magnet holes and tapped holes. (Illustration C)
- Please make sure that there is no dust before installing flat head screws. (Illustration D)



Tightening Torque (Reference Value)

Magnets - Countersunk		
Tightening Torque (Value for Reference)		
A Dimension of Magnet	Included Flat Head Screw	N · m
8	M2.5-6	0.2
10	M3-8	0.6
12	M3-8	0.6
15	M4-10	1.4
20	M5-12	2.9
25	M6-15	5.0

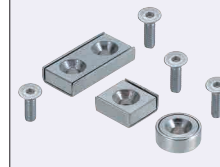
Tightening beyond the specified torques may cause magnet breakage.
We revised the safety factor and modified the reference value from the 2014 Catalog.

Magnet

Countersunk with Holder / Oval Holder

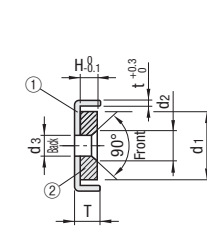
The holders are used in a combination to protect the magnet.

Countersunk with Holder



RoHS 10

Type		Material	Surface Treatment	Material	Surface Treatment	Heat Resistant Temperature	Polarity	
Round	Square						Front	Back
HXCC	HXCS	SS400 Equivalent	Nickel Plating	Neodymium Magnet	Nickel Plating	80°C	N	S
HXCC-S	HXCSH						S	N
HXCCCH	HXCSH	Heat-resistant Neodymium Magnets				150°C	N	S
							S	N



Handle with care since these materials are very brittle. For Tightening Torque (Value for Reference), refer to P.291.

Part Number	Type	A	T	d1	H	d2	d3	t	B	P	Accessory (Stainless Steel Flat Head Screw)		Attraction Force N{kgf}				Surface Magnetic Flux Density Gauss {G}	Unit Price				
											HXCC-HXCC-S-HXCCCH-HXCS	HXCR	HXCCCHXCC-SHXCCCH	HXCS	HXCR	HXCC		HXCC-S	HXCCCH	HXCS	HXCR	
8	(Round Type) HXCC	4	6.4	3.2	5.5	3	0.6	15	8	M2.5-8x1 pc.	M2.5-8x2 pcs.	3.9 {0.4}	7.8 {0.8}	17.6 {1.8}	1200~3900							
10	(Round Type) HXCC-S	5	8	4	6.5	3.5	0.8	20	10	M3-10x1 pc.	M3-10x2 pcs.	5.8 {0.6}	19.6 {2.0}	39.2 {4.0}	1500~4000							
12	(Round Type) HXCCCH	6	9.6	4.8	6.5	3.5	1.0	25	12	M3-10x1 pc.	M3-10x2 pcs.	15.7 {1.6}	29.4 {3.0}	68.6 {7.0}	3200~4000							
15	(Square Type) HXCS	6	12.6	4.8	9	4.8	1.0	30	15	M4-12x1 pc.	M4-12x2 pcs.	24.5 {2.5}	49.0 {5.0}	98.1 {10.0}	3800~4000							
20	(Rectangle Type) HXCR	7	17.2	5.6	11	5.8	1.2	40	20	M5-15x1 pc.	M5-15x2 pcs.	58.8 {6.0}	127.5 {13.0}	230.5 {23.5}	3800~4000							
25		8	21.2	6.2	13	7.0	1.6	50	30	M6-16x1 pc.	M6-16x2 pcs.	152.0 {15.5}	181.4 {18.5}	294.2 {30.0}	3700~4000							

Attraction force and surface magnetic flux density are for reference only.

Ordering Example	Part Number
	HXCC10

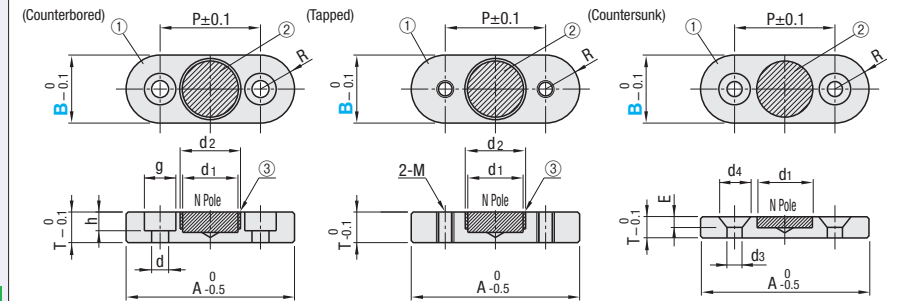
Oval Holder



RoHS 10

Type		Material	Surface Treatment	Material	Surface Treatment	Material	Heat Resistant Temperature
Counterbored	Tapped						
HXUKZ	HXUKM	Sintered Iron	Electroless Nickel Plating	Neodymium Magnet	Nickel Plating	Brass (C3604BD)	80°C
HXUKZN	HXUKMN						
		HXUKSN	SS400 Equivalent				

Brass is not contained in Countersunk Type.



Part Number	Type	B	A	P	T	R	E	d1	d3	d4	Accessory (Stainless Steel Flat Head Screw)				Attraction Force N {kgf}				Surface Magnetic Flux Density Gauss {G}				Unit Price			
											g	d	h	M (Coarse)	HXUKZ, HXUKM	HXUKZN, HXUKMN	d1	d2	HXUKZ, HXUKM	HXUKZN, HXUKMN	HXUKZ, HXUKM	HXUKZN, HXUKMN				
(Counterbored) HXUKZ	10	27	17	7	5	8	4.5	4.5	M4	8.8 {0.9}	13.7 {1.4}	7	8	2700~2900	3600~3900											
																19.6 {2.0}	30.4 {3.1}	9.5	11	2800~3100						
(Tapped) HXUKM	16	41	25	9	8	9.5	5.5	5.5	M5	38.2 {3.9}	63.7 {6.5}	12.5	14	2900~3300	3800~4200											
																60.8 {6.2}	114.7 {11.7}	16.5	18	2900~3400	4000~4400					
(Counterbored) HXUKZN	20	50	30	10	10	10	10	10	M6	60.8 {6.2}	114.7 {11.7}	16.5	18	2900~3400	4000~4400											

Part Number	Type	B	A	P	T	R	E	d1	d3	d4	Accessory (Stainless Steel Flat Head Screw)	Attraction Force N {kgf}	Surface Magnetic Flux Density Gauss {G}	Unit Price	
														HXUKZ	HXUKM
(Countersunk) HXUKSN	10	25	15	3	5	1.5	7	3.5	6.5	M3-6x2 pcs.	13.7 {1.4}	2700~2900			
													29.4 {3.0}	2800~3100	

Attraction force and surface magnetic flux density are for reference only.

Ordering Example	Part Number
	HXUKZ10