

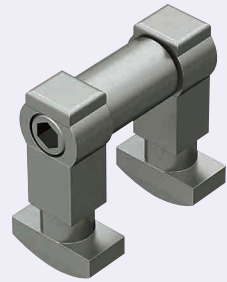
Blind Joint Components

Post Assembly Insertion Double Joint Kits for 6 Series (Slot Width 8mm) Aluminum Extrusions

Alterations necessary to use this component

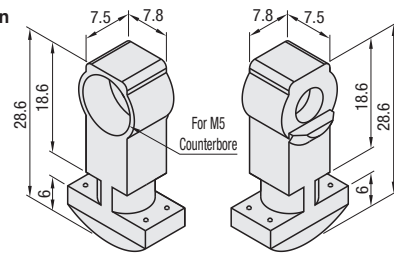
M Type Hole Alterations
P.766

Post Assembly Insertion Double Joint Kit

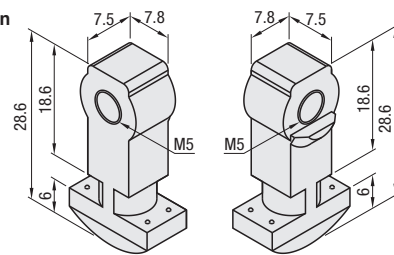


HPJN (Post-Assembly Insertion Double Joint)

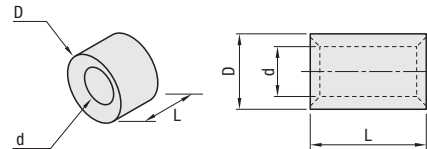
① Post-Assembly Insertion Double Joint A



② Post-Assembly Insertion Double Joint B



③ Joint Pipe



RoHS10

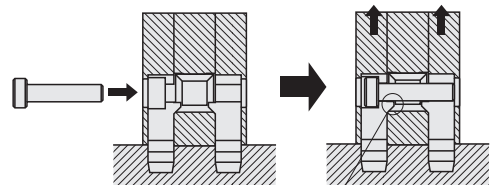
Part Name	Material	
Post-Assembly Insertion Double Joint (A, B)	SCS13	
Joint Pipe	No.6-30	SUS304
	No.6-50	SUS304 Equivalent (Sintered)
	No.6-90	SUS304
	No.6-100	SUS304
	No.6-120	SUS304
Hex Socket Head Cap Screw	SUS304	

Part Number	Accessory				Unit Price	Volume Discount Rate		
	Type	No.	Quantity	Quantity				
HPJN	6-30	Post-Assembly Insertion Double Joint A6	1	Post-Assembly Insertion Double Joint B6	1	1	1 - 19 pc(s)	20-200
	6-60							
	6-50							
	6-90							
	6-100							
	6-120							
		③ Joint Pipe						
		Joint Pipe 6-30		M5x22				
		Joint Pipe 6-60		M5x50				
		Joint Pipe 6-50		M5x40				
		Joint Pipe 6-90		M5x80				
		Joint Pipe 6-100		M5x90				
		Joint Pipe 6-120		M5x110				

③ Joint Pipe

Part Name	L	D	d
Joint Pipe 6-30	12	11	7
Joint Pipe 6-60	42		
Joint Pipe 6-50	32		
Joint Pipe 6-90	72		
Joint Pipe 6-100	82		
Joint Pipe 6-120	102		

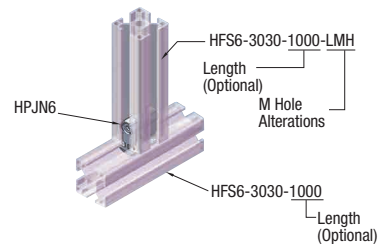
Post Assy. Insert. Double Joint Kit	Applicable Extrusion No.	[Exception] Extrusion Not Available
HPJN6-30	6-3030	Not usable for surfaces without slots.
HPJN6-60	6-3060 6-6060	
HPJN6-50	6-5050 6-50100	
HPJN6-90	6-3090 6-6090	
HPJN6-100	6-50100 6-100100	
HPJN6-120	6-30120 6-60120	



The tapered part of a Joint Pipe and the tab of a post-assembly insertion joint create upward lifting force, connecting the extrusions together.

Example

Installation Example



Ordering Example Part Number HPJN6-30

ex

Example

Pre-Assembly Insertion Double Joint Connection (Connect the extrusion at the corners or the center.)

Step	Front View	Side View	Post-Assembly Insertion Double Joint	Specification Method by Part Number (30 Square as an Example)
1				① HFS6-3030-1000-LMH ② HFS6-3030-1000
2				① Post-Assembly Insertion Double Joint A ② Post-Assembly Insertion Double Joint B
3				③ Joint Pipe
4				Hex Wrench
5				When tightening the hex socket head cap screw, pulling force works as illustrated above, and connects two extrusions.
6				App. Example of Rectangle Shape Extrusion

For extrusions with three slots, M holes cannot be drilled on the center one. (For description of M hole, refer to P.766)

Ex.) HFS6-3090-1000-LMH