


# Flat Belt Conveyor SV Series

## Head Drive, 2-Groove Frame (Pulley Dia. 30mm)

CE  
Compliant

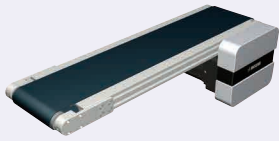
\*The above compliance applies only for Single-phase 230V Motors.

For part numbers enclosed with the  frame or marked with \*, the Self Kit Conveyor service is applicable.

Dedicated web site <http://fa.misumi.jp/cvs/>  
The above site can be used to search for Conveyor components and their maintenance parts.



■Features: Streamlined structuring has achieved the low cost starting around JPY30,000.

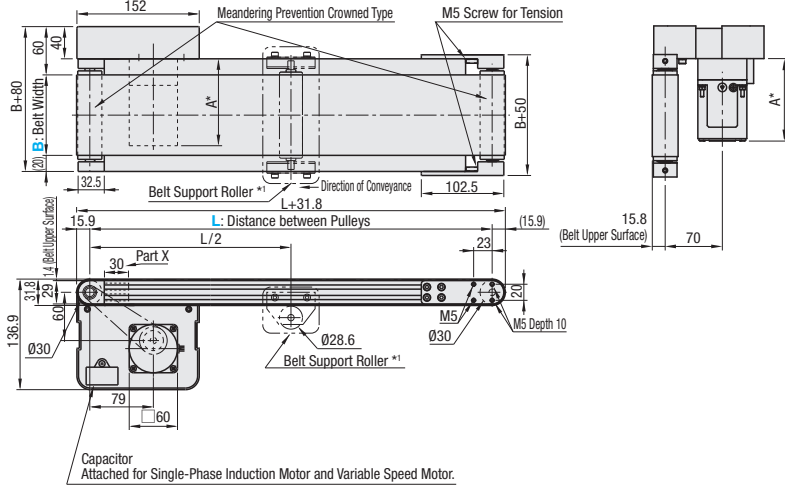


### SVKA

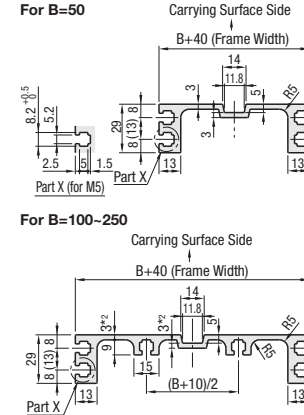
- \* When L>400, each slot has four (4) nuts inserted. When counterbores for inserting nuts are required, so specify in form of alteration ordering.
- \*1. When L>2005, belt support rollers are mounted at these positions.
- ① The dimensions in the diagram is for Belt Specification H (0.9mm THK). Note that belt thickness varies by Belt Specifications. For Belt Specifications, see P.1313--.
- ② The X section of the frame is used for pulley holder mounting. The nuts cannot be moved to this area.
- ③ On some operating environments, conveyance failure may occur.

	Frame	Motor Cover	Pulley Holder
<b>M</b> Material	Aluminum	Aluminum	Aluminum
<b>S</b> Surface Treatment	Clear Anodize	Paint	Paint

#### 6W Motor Type

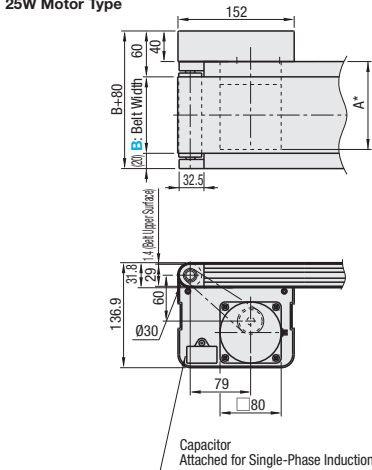


#### Frame Cross Section and Enlarged View (Symmetrical)

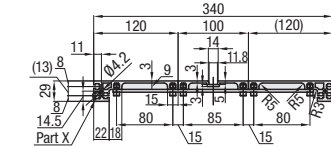


- ④ For B=50, down facing slot is not provided.
- ⑤ For B=200 and 250, \*2 section thickness is 4mm.
- ⑥ Compatible with JIS standard hex nuts.
- ⑦ A pre-assembly insertion nut is not included.

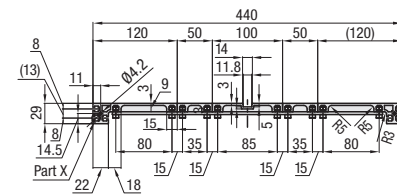
#### 25W Motor Type



#### For B=300



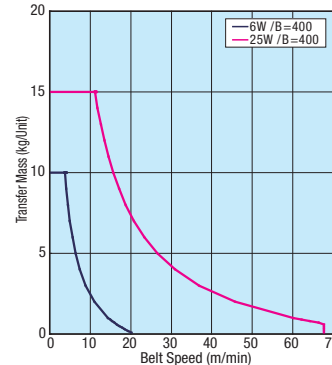
#### For B=400



#### \* A Dimension (Motor Overall Length) Details

Output (W)	Motor		Reduction Ratio	A
	Specification	Manufacturer		
6W	Induction Motor	Panasonic	5-25	101.0
		Oriental	30-180	108.0
		Taiwanese	5-25	105.0
	Variable Speed Motor	Oriental	5-75	115.0
		Taiwanese	90-180	127.0
		Taiwanese	5-25	115.0
25W	Induction Motor	Panasonic	30-180	125.0
		Oriental	5-75	127.4
		Taiwanese	90-180	134.4
	Variable Speed Motor	Panasonic	5-180	115.0
		Oriental	5-18	117.0
		Taiwanese	25-180	127.5

#### ■Conveying Capacity



#### ■Gearhead Reduction Ratio

\* Conveyance speeds are reference values based on IM (motor rotational speed 1,500 rpm [50 Hz]/1,800 rpm [60 Hz]).  
\* May decrease depending on load condition.

Gearhead Reduction Ratio	Belt Speed (m/min)	
	50Hz	60Hz
5	56.4	67.7
7.5	37.6	45.1
9	31.3	37.6
12.5	22.6	27.1
15	18.8	22.6
18	15.7	18.8
25	11.3	13.5
30	9.4	11.3
36	7.8	9.4
50	5.6	6.8
60	4.7	5.6
75	3.8	4.5
90	3.1	3.8
100	2.8	3.4
120	2.4	2.8
150	1.9	2.3
180	1.6	1.9

⑧ For motor specification SCM, this is adjustable up to (1/15) × (max. speed).  
The weight that can be conveyed decreases as the speed decreases.

Part Number	B Selection	L 5mm Increment	Motor			Belt Specification	Motor Manufacturer Selection	
			Output (W)	Voltage (V)	Specification			
SVKA	50*	300 ~ 3000  500* 800* 1000*	6 25*	TA115 (Single-phase)*	IM* (Induction Motor)	5 7.5 9 12.5 15 18 25 30 36 50	H (General Specifications, Green)* W (General Specifications, White) G (For Sliding, Green) S (For Sliding, White) D (For Electronic Parts Transfer) F (For Food Transfer, White) O (Oil Resistant, Navy Blue) N (Non-adhesive, White) J (No Belt)	A (Panasonic Motor) B (Oriental Motor)* C (Taiwanese Motor)  * SCM (Variable Speed Motor) is not selectable for A. * For C, the conveyance speed may decrease by approx. 20%.  R (No Motor, Gearhead)*
	25				SA220 (3-Phase) SA230 (3-Phase)	IM (Induction Motor)		
	6 25		NV* (No Motor)	NM (No Motor)*	NH (No Gearhead)*	* When A or B is selected as the Motor Manufacturer Option, choose a belt from Belt Specification table below.		

- ⑨ Connect the motor so that the belt rotates in the direction of conveyance. For connection diagram, and details of motor and inverter, see P.1301--.
- ⑩ When "No motor, gearhead" is selected, the motor mounting hole pitch will vary depending on the motor's power rating. For the dimension details, see Technical Information in our Conveyor Selection web site.
- ⑪ When "No motor, gearhead" is selected, this unit will be delivered unassembled. The customer is to assemble the unit by following instructions on the included assembly procedure manual. See our Conveyor Selection site for assembly procedures and packaging details.
- ⑫ Part numbers marked with \* are the ones with support for Self Kit Conveyor service.
- ⑬ Purple Color Type of Belt is the Catalog Standard-Altered product. For details, see P.1313--.
- ⑭ Regardless of the belt specifications, it is not recommended to use the conveyor while the conveyor is tilted.

Belt Specification	Standard Belt (Body Price Only)	Optional Belt 1	Optional Belt 2	No Belt
General Purpose	H (Green), W (White), HG (Green)	-	HY (Yellow Green), HBN (Sky Blue)	J (No Belt)
For Sliding	G (Green), S (White)	-	-	
For Inclined Transfer	LG (Green), LW (White)	-	-	
Grip Type	-	GG (Green), GW (White)	GSN (Green)	
Oil Resistant	O (Navy Blue), OH (Green), OG (Green)	OW (White)	ON (White)	
Non-adhesive	N (White), NS (White)	NB (Sky Blue), NBG (Lime Green), HH (Green), HW (White)	NWN (White), NSN (Sky Blue), NGN (Lime Green), HBG (Green), HBW (White), BW (White)	
For Food Transfer	F (White)	KW (White), KSB (Sky Blue), PHB (Sky Blue)	PHN (Sky Blue), PWN (White), KWN (White)	
For Electronic Parts Transfer	D (Black), DS (Black)	-	DG (Black)	


- ⑮ For flat belt details, see P.1313--.
- ⑯ For Motor Manufacturer C (Taiwanese Motor), select either the H, W, G, S, D, F, O, or J (No Belt) option.
- ⑰ Select a belt with a thickness of 1.0 mm or less for a motor output of 6 W.
- ⑱ Since only the transporting surface side is designed to be oil resistant, Oil Resistant Types are not useable on environments where it is very likely that oil adheres to the back face.

Part Number	B	Body Price 1-10 pc(s).																							
		L300-400	L405-500*	L505-600	L605-700	L705-800*	L805-900	L905-1000*	L1005-1100	L1105-1200	L1205-1300	L1305-1400	L1405-1500	L1505-1600	L1605-1700	L1705-1800	L1805-1900	L1805-2000	L2005-2200	L2205-2400	L2405-2600	L2605-2800	L2805-3000		
SVKA	50*																								
	100*																								
	150*																								
	200																								
	250																								
	300																								

⑲ For orders larger than indicated quantity, please check with WOS.

Motor Spec. Price	Motor Output	Specification	A (Panasonic Motor)	B (Oriental Motor)	C (Taiwanese Motor)	R (No Motor, Gearhead)
			6W	IM		
	25W	SCM				

Belt Spec. Price	Standard Belt	Optional Belt 1	Optional Belt 2	No Belt

Ordering Example:  Part Number - B - L - Motor - Belt Specification - Motor Manufacturer Selection

SVKA - 100 - 1000 - 25 - T100 - IM - 25 - H - C

#### ■Machine Weight (With a Motor Output of 6 W)

\*Reference values (may vary depending on motor manufacturer)(kg)

Belt Width B (mm)	Distance Between Pulleys L (mm)				
	500	1000	1500	2000	2500
50	3.7	4.8	5.8	6.9	7.9
100	4.4	5.8	7.3	8.7	10.4
150	5	6.8	8.7	10.5	12.8
200	5.7	7.9	10.1	12.3	15.1
250	6.3	8.9	11.6	14.3	17.3
300	6.8	10.5	11.9	16	19
400	8.2	12.4	15	19.7	23.9

\*When the motor output is 25 W, add 1.1 kg.



- Motor Position Reversed
- Additional Counterbores
- Motor Cover with Window
- Brackets for Speed Controller Included
- Post-Assembly Insertion Nuts Included
- Motor with Terminal Box
- Stands (Legs)

For details of Alterations, see P.1298--.