

Points of comparison against similar products

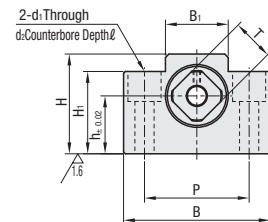
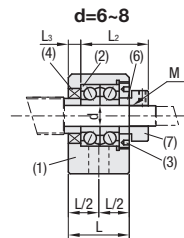
For Load Rating, C-VALUE components are different from the similar products. (For details, see P.772.) When considering adopting C-VALUE parts, select them by comparing against similar products in the specifications. P.777



Component Details

Number	Part Name	Qty.
(1)	Bearing Housing	1
(2)	Overseas-made angular contact bearing Grade S	1 Set
(3)	Cover	1
(4)	Oil Seal	2
(5)	Hex Socket Head Cap Screw	4
(6)	Collar	2
(7)	Bearing Nut (with Set Piece)	1

Type	Material	Surface Treatment
Fixed Side only	(1)(3)	(6)(7)
C-BSW	S45C	SS400
C-BSW-SET	S45C	SS400
		Black Oxide



- d=6 and 8 come with one Oil Seal (4).
- Do not disassemble (1), (2), (3), (4) and (5) as they must remain as an assembled unit.
- When used together with a MISUMI ball screw, there is one support unit accessory collar spare.

Part Number	Type	No.	Support Side SET	d	L	L1	L2	L3	B	H	h	B1	H1	P	d1	d2	l	M (Fine)	T	Oil Seal Applicable Shaft Dia.	C-BSW		C-BSW-SET					
																					Unit Price	Unit Price	Unit Price	Unit Price				
C-BSW		6	-SET (Only when purchasing support units in set)	6	20	5.5	22	3.5	42	25	13	18	20	30	5.5	9.5	11		M6x0.75	12	9.5							
		8S		8	23	7	26	4	52	32	17	25	26	38	6.6	11	11		M8x1.0	14	10							
		8																										
		10S		10	24	6	29.5	6	70	43	25	36	24	52	9					M10x1.0	16	12						
		10																										
		12																										
		15S		15	25		36	5	80	49	30	41		60							M12x1.0	19	15					
		15																										
		20					20	42	10	50	10	95	58	56	75	11					M15x1.0	22	20					
		25					25	48	13	60	14	105	68	35	66						M20x1.0	30	25					
																			M25x1.5	35	31.5							

* Take care in combining No.20 with Ball Screw BSSZ(K)2510, BSR(K)2510, BSST2510 or BSBR(K)2510 or in combining No.15 with Ball Screw BSBR(K)2010. The ball screw nut may come in contact with the bottom surfaces.

Ordering Example

Part Number

C-BSW15 (Fixed-side single type)

C-BSW15-SET (SET part type)

- For details of Bearings, Included Collars and Bearing Nuts in addition to mounting interface accuracies of Support Units, see P.777.
- Ball Screw Compatibility Chart P.774
- * Store Accessories with care since they are required when assembling.

Example <Elevator Device>

Support Unit C-VALUE Parts

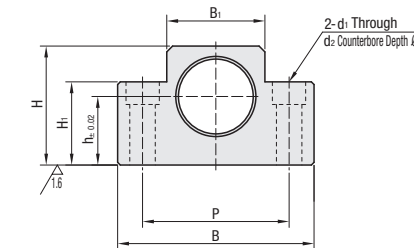
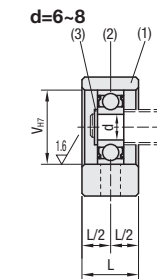
Precision Ball Screw C-VALUE Parts

Stocker

- Stocker elevator device
- Lift in stepped increments for every work insertion
- Medium precision/low frequency positioning

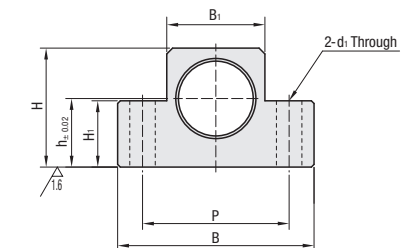
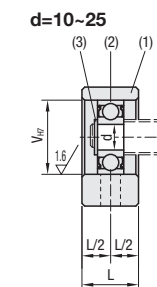


Type	Material	Surface Treatment
C-BUN	S45C	Black Oxide



Component Details

Number	Part Name	Qty.
(1)	Housing	1
(2)	Overseas-made radial bearing	1
(3)	Retaining Ring (STWN)	1



Part Number	Type	No.	d	L	B	H	h	B1	H1	P	V	d1	d2	l	Bearing	Retaining Ring	C-BUN														
																	Unit Price	Unit Price													
C-BUN		6	6	12	42	25	13	18	20	30	17	5.5	9.5	11	B606ZZ	STWN6															
		8															14	52	32	17	25	26	38	26	6.6	11	11	B608ZZ	STWN8		
		10															8	70	43	25	36	24	52	22	9	-	-	B600ZZ	STWN10		
		12															10	80	49	30	41	25	60	32				B600ZZ	STWN15		
		15															15	95	58	30	56	25	75	47				B620ZZ	STWN20		
		20															20	105	68	35	66	25	85	52	11			B620ZZ	STWN25		
		25															25	105	68	35	66	25	85	52	11			B620ZZ	STWN25		

* Take care in combining No.20 with Ball Screw BSSZ(K)2510, BSR(K)2510, BSST2510 or BSBR(K)2510 or in combining No.15 with Ball Screw BSBR(K)2010. The ball screw nut may come in contact with the bottom surfaces.

Ordering Example

Part Number

C-BUN15 (Support side, separate item)

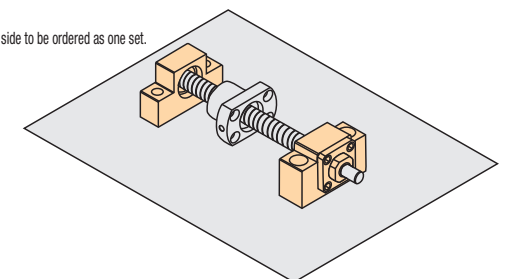
SET part overview

For customers using in conjunction with fixed side and support side MISUMI recommends a SET, which allows the fixed side and support side to be ordered as one set. 5% price reduction when ordering in SETs

SET part

Fixed Side

Support Side



<SET parts>

SET Part Number	SET parts	
	Fixed Side Part Number	Support Side Part Number
C-BSW6-SET	C-BSW6	C-BUN6
C-BSW8S-SET	C-BSW8S	C-BUN8
C-BSW8-SET	C-BSW8	C-BUN8
C-BSW10S-SET	C-BSW10S	C-BUN10
C-BSW10-SET	C-BSW10	C-BUN10
C-BSW12-SET	C-BSW12	C-BUN12
C-BSW15S-SET	C-BSW15S	C-BUN15
C-BSW15-SET	C-BSW15	C-BUN15
C-BSW20-SET	C-BSW20	C-BUN20
C-BSW25-SET	C-BSW25	C-BUN25