

Blind Joint Components

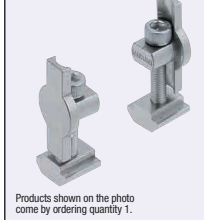
Pre-Assembly Insertion Double Joint Kits for 6 Series (Slot Width 8mm) Aluminum Extrusions

Alterations necessary to use this component

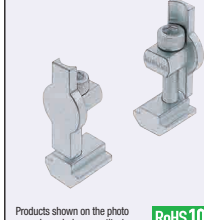
S Type Hole Alterations
P.791

Features: Two screws are used for connection. Can be used to extend extrusions as well as mounting to plates. A joint type superior in mounting flexibility.

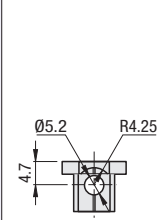
Pre-Assembly Insertion Double Joint Kits
Standard Type



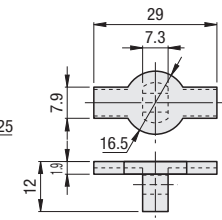
Pre-Assembly Insertion Double Joint Kits
Offset Nut Type



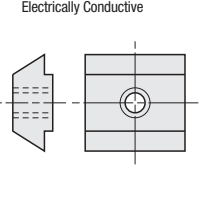
HDJSN
(Standard)



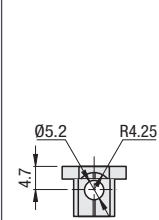
(1) Pre-Assembly Insertion Double Joints
HDJFSN (SUS316 Equivalent, Sintered)



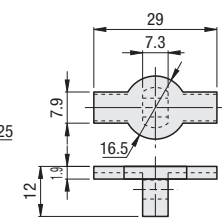
(2) Pre-Assembly Insertion Nuts
HNHTSN (SUS316 Equivalent, Sintered)
Electrically Conductive



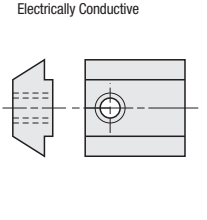
HDJHSN
(Offset Nut Type)



(1) Pre-Assembly Insertion Double Joints
HDJFSN (SUS316 Equivalent, Sintered)



(2) Pre-Assembly Insertion Offset Nuts
HNHTSN (SUS316 Equivalent, Sintering)
Electrically Conductive



Pre-Assembly Insertion Double Joints	Part Number	Usable in any direction	Usable in the short length direction	Usable in the long length direction	Usable in the direction where there is no flat surface at the connecting part
HDJSN6 HDJHSN6 HDJFSN6	3030	<input type="checkbox"/>	<input type="checkbox"/>	<input type="checkbox"/>	<input type="checkbox"/>
	3060	<input type="checkbox"/>	<input type="checkbox"/>	<input type="checkbox"/>	<input type="checkbox"/>
	NFS6	<input type="checkbox"/>	<input type="checkbox"/>	<input type="checkbox"/>	<input type="checkbox"/>
	HFS6	<input type="checkbox"/>	<input type="checkbox"/>	<input type="checkbox"/>	<input type="checkbox"/>
	GFS6	<input type="checkbox"/>	<input type="checkbox"/>	<input type="checkbox"/>	<input type="checkbox"/>
	EFS6	<input type="checkbox"/>	<input type="checkbox"/>	<input type="checkbox"/>	<input type="checkbox"/>
	CAF6	<input type="checkbox"/>	<input type="checkbox"/>	<input type="checkbox"/>	<input type="checkbox"/>
	HFSY6	<input type="checkbox"/>	<input type="checkbox"/>	<input type="checkbox"/>	<input type="checkbox"/>
	NFS6	<input type="checkbox"/>	<input type="checkbox"/>	<input type="checkbox"/>	<input type="checkbox"/>
	NEFS6	<input type="checkbox"/>	<input type="checkbox"/>	<input type="checkbox"/>	<input type="checkbox"/>
	6090	<input type="checkbox"/>	<input type="checkbox"/>	<input type="checkbox"/>	<input type="checkbox"/>
	60120	<input type="checkbox"/>	<input type="checkbox"/>	<input type="checkbox"/>	<input type="checkbox"/>
HDJHSN6 HDJFSN6	3030	<input type="checkbox"/>	<input type="checkbox"/>	<input type="checkbox"/>	<input type="checkbox"/>
	3060	<input type="checkbox"/>	<input type="checkbox"/>	<input type="checkbox"/>	<input type="checkbox"/>
	HFS6	<input type="checkbox"/>	<input type="checkbox"/>	<input type="checkbox"/>	<input type="checkbox"/>
	EFS6	<input type="checkbox"/>	<input type="checkbox"/>	<input type="checkbox"/>	<input type="checkbox"/>
	NEFS6	<input type="checkbox"/>	<input type="checkbox"/>	<input type="checkbox"/>	<input type="checkbox"/>
	6090	<input type="checkbox"/>	<input type="checkbox"/>	<input type="checkbox"/>	<input type="checkbox"/>
	6060	<input type="checkbox"/>	<input type="checkbox"/>	<input type="checkbox"/>	<input type="checkbox"/>
	HFSH6	<input type="checkbox"/>	<input type="checkbox"/>	<input type="checkbox"/>	<input type="checkbox"/>
	EFSH6	<input type="checkbox"/>	<input type="checkbox"/>	<input type="checkbox"/>	<input type="checkbox"/>
	3030	<input type="checkbox"/>	<input type="checkbox"/>	<input type="checkbox"/>	<input type="checkbox"/>
	3060	<input type="checkbox"/>	<input type="checkbox"/>	<input type="checkbox"/>	<input type="checkbox"/>
	NFSL6	<input type="checkbox"/>	<input type="checkbox"/>	<input type="checkbox"/>	<input type="checkbox"/>
HFSL6	<input type="checkbox"/>	<input type="checkbox"/>	<input type="checkbox"/>	<input type="checkbox"/>	
HFSG6	<input type="checkbox"/>	<input type="checkbox"/>	<input type="checkbox"/>	<input type="checkbox"/>	
6060	<input type="checkbox"/>	<input type="checkbox"/>	<input type="checkbox"/>	<input type="checkbox"/>	
3030	<input type="checkbox"/>	<input type="checkbox"/>	<input type="checkbox"/>	<input type="checkbox"/>	
3060	<input type="checkbox"/>	<input type="checkbox"/>	<input type="checkbox"/>	<input type="checkbox"/>	
HFSB6	<input type="checkbox"/>	<input type="checkbox"/>	<input type="checkbox"/>	<input type="checkbox"/>	
EFSB6	<input type="checkbox"/>	<input type="checkbox"/>	<input type="checkbox"/>	<input type="checkbox"/>	
NEFSB6	<input type="checkbox"/>	<input type="checkbox"/>	<input type="checkbox"/>	<input type="checkbox"/>	
6090	<input type="checkbox"/>	<input type="checkbox"/>	<input type="checkbox"/>	<input type="checkbox"/>	
6060	<input type="checkbox"/>	<input type="checkbox"/>	<input type="checkbox"/>	<input type="checkbox"/>	
HFSLB6	<input type="checkbox"/>	<input type="checkbox"/>	<input type="checkbox"/>	<input type="checkbox"/>	
3030	<input type="checkbox"/>	<input type="checkbox"/>	<input type="checkbox"/>	<input type="checkbox"/>	
3060	<input type="checkbox"/>	<input type="checkbox"/>	<input type="checkbox"/>	<input type="checkbox"/>	

⊗ Not applicable to extrusions not listed above.



(Ref.) Corner section when using this joint

Pre-Assembly Insertion Double Joint Kits

Part Number	Type	No.	Accessory			Unit Price	Volume Discount Rate
		(1) Pre-Assembly Insertion Double Joint		(2) Pre-Assembly Insertion Nut		(3) Hex Socket Head Cap Screw	
		Quantity	Quantity	Quantity	Quantity	1~99 pc(s)	100~200 pcs
HDJSN	6	HDJFSN6	6	HNTTSN6-5	2	SCB5-25	2
HDJHSN	6	HDJFSN6	6	HNTHSN6	2	SCB5-25	2

(1) Pre-Assembly Insertion Double Joint Single Item

Part Number	Type	Unit Price	Volume Discount Rate
		1~99 set(s)	100~
HDJFSN	6		

⊕ One set is required to connect one place.

Ordering Example
Part Number: **HDJSN6**

Features: Pre-Assembly Insertion Double Joint installable without alterations. (No holes are required on the mating extrusion.)

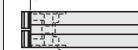
Aluminum Extrusions with Built-in Pre-Assembly Insertion Double Joints

Part Name	Material	Surface Treatment
Aluminum Extrusion	AGN01SS-T5	Anodize
Pre-Assembly Insertion Double Joint Kits	SUS316 Equivalent	
Offset Nut	SUS316 Equivalent	
Hex Socket Head Cap Screw	SUS304	

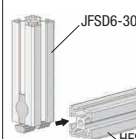
JFSD6-3030L
(Left End Face Pre-Assembly Insertion Double Joint Built-in Type)



JFSD6-3030W
(Both End Face Pre-Assembly Insertion Double Joints Built-in Type)



Example
JFSD6-3030L
HFS6-3030



Tighten with a hex wrench while adjusting the position.

Part Number	Joint Component	L 0.5mm Increment	Extrusion	Built-in Joint Component	A	Required Wrench for Tightening	Extrusion Unit Price	Joints, Others
				Pre-Assembly Insertion Double Joint	Quantity		Less than 300mm	300mm or more (JPY/m)
JFSD	6-3030	L (Left End Face only) W (Double End Faces)	HFS6-3030 (P597)	HDJHSN6	2 4	30 For M5		

Ordering Example
Part Number - L
JFSD6-3030L - 1200

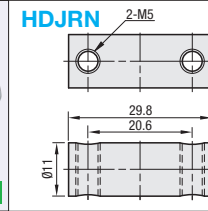


Alterations
⊕ Alterations only on this page are available.

Alterations	Code	Spec. Extrusion	Tap	Depth
Right End Face Tapping	RTP			
⊕ JFS□□-□□□□ L is only applicable to Left End Face Joint Pre-Inserted Type.	Right End Face Tapping	6-3030	M8	24

Alterations	Code	Spec. Extrusion	H	Hole Dia.
Right End Face Wrench Hole	RCH RCV			
⊕ JFSC□□-□□□□ JFSS□□-□□□□ Applicable to	RCH RCV	6-3030	15	8

Nuts for Pre-Assembly Insertion Double Joints
Joint Nut



Example
Material SUS304

Pre-Assembly Insertion Double Joint Connection (Connect the extrusion at the center.)

Step 1: Front View, Side View, Sketch Drawing. (2)HNHTSN6-5. Extrusion(A) HFS6-3030-1000. (2) Pre-insert the pre-assembly insertion nuts into the extrusion (A).

Step 2: Front View, Side View. (3)SCB5-25. S Type Hole. Extrusion(B). Insert screw (3) into the extrusion (B) with S hole. This is, put the screw head through the S hole, then lift the screw along the slot until the screw tip is located above the S hole.

Step 3: Front View, Side View. (1)HDJFSN6. Extrusion(B). Insert Pre-Assembly Double Joint (1) into the extrusion (B) where the screws were inserted.

Step 4: Front View, Side View. (Image of Inside of the Slot). Put the screw through the hole of the Pre-Assembly Double Joint in the slot of the extrusion (B).

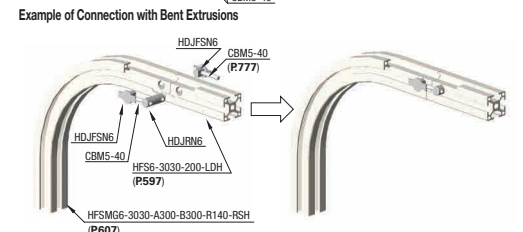
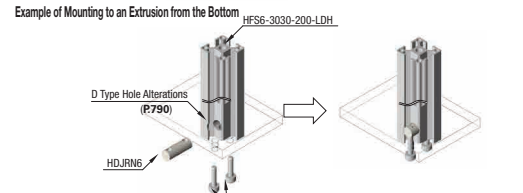
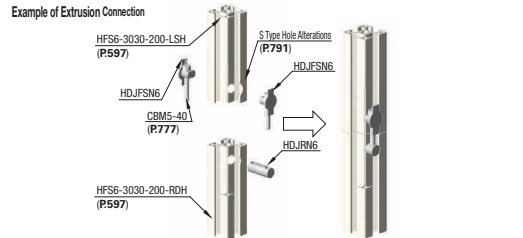
Step 5: Front View, Side View. Extrusion(B) HFS6-3030-800-LSH. Extrusion(A). Place the extrusion (B) on the extrusion (A), then connect the pre-assembly insertion nut and screw to the double joint (1) by sliding them from both sides.

Step 6: Front View, Side View. Tighten with a hex wrench while adjusting the position.

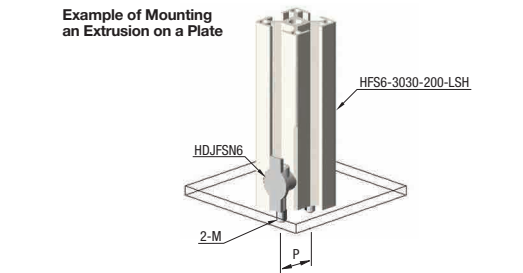
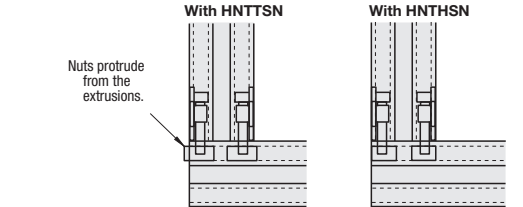
Part Number	Type	No.	Applicable Extrusion	Applicable Pre-Assembly Insertion Double Joints	Screw	Mass (g)	Unit Price 1~99 pc(s)	Volume Discount Rate 100~120
HDJRN	6		6 Series - 30 Square	HDJFSN6	CBM5-40	43		

Ordering Example
Part Number: **HDJRN6**

Example



• How to Use Pre-Assembly Insertion Double Joint Connection at the Corner
(2) If HNTHSN6 is used instead of HNTTSN6-5, Pre-Assembly Insertion Double Joint can be used at the corner of the extrusion.



Part Number	Type	No.	Extrusion Type	M	P
HDJFSN	6	6 Series - 30 Square	5	20.6	
				40.6	
				50.6	

⊕ Same shape of different surface treatment or material can be also used.