

OIL-FREE SLIDE UNITS FOR LOOSE CORE

—STANDARD • ADJUSTING TYPE—

Ⓜ Non JIS material definition is listed on P.1351 - 1352



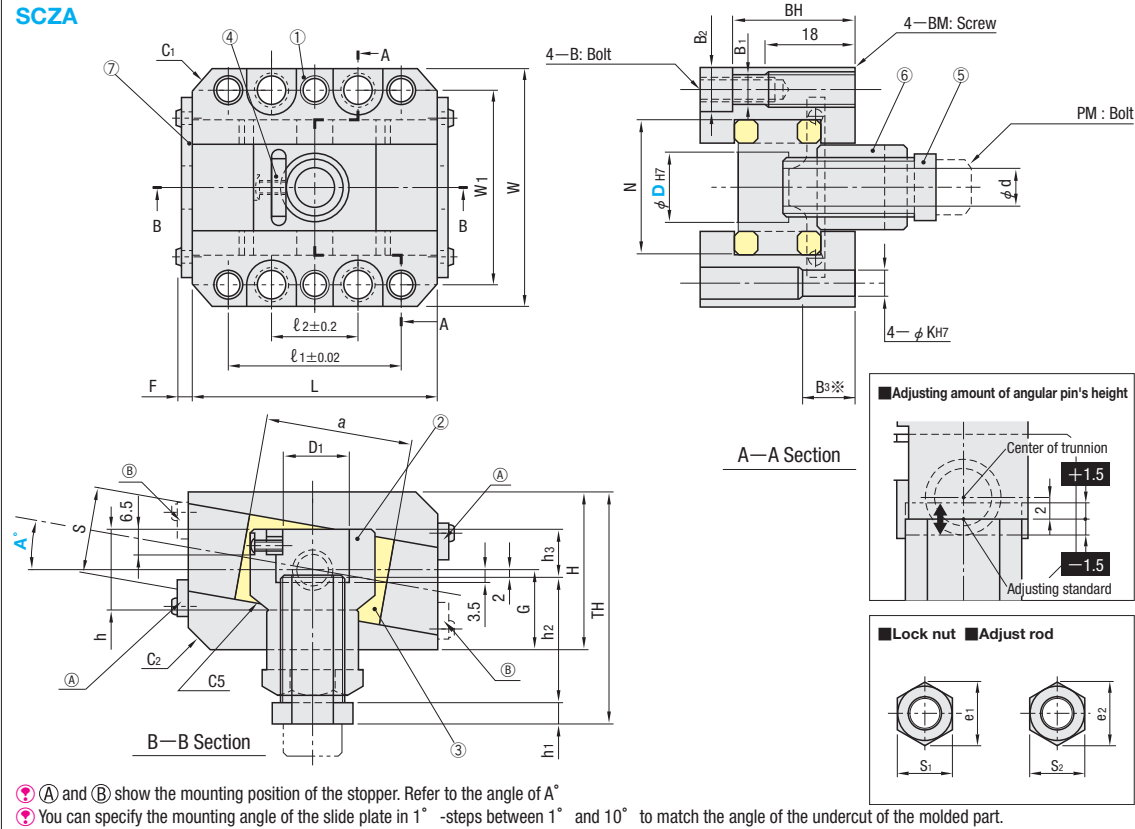
RoHS

- Features of Oil-free Slide Units for Loose Core**
- Enables the inclined pin to slide smoothly when pushing out a loose core (including undercut) at an angle.
 - The inclined pin holder slides within the range of θ , and the automatic center adjustment function reduces wear and scoring on the guide and slide plates.

Item	Components	Parts Name	M	Piece
①	Slide base	Slide Base	S55C	2
②	Inclined pin holder	Inclined Pin Holder	SCM440	1
③	Slide plate	Slide Plate	* CAC304+Solid lubricant	2
④	Key	Key	S45C	1
⑤	Adjust rod	Adjust Rod	S45C	1
⑥	Lock nut	Lock Nut	S45C	1
⑦	Stopper	Stopper	SS400	2

* Grade-4 high strength brass (Old JIS: HBS4)

SCZA



- Ⓜ (A) and (B) show the mounting position of the stopper. Refer to the angle of A° .
- Ⓜ You can specify the mounting angle of the slide plate in 1° -steps between 1° and 10° to match the angle of the undercut of the molded part.

① Slide base			② Angular pin holder						③ Slide plate			TH	G	F	Part Number	Mounting angle of slide plate A°	U/Price			
W	L	H	C1	C2	D1	d	h	h1	h2	h3	N						S	a	Type	D
56	55	35	5	—	11	5.5	16	6	33	10	30	20	35	58.5	17.5	4.65	SCZA	12 16 20 25 30	Ⓜ 2~4, 6~10 are manufactured products, so they are shipped on the 12th days.	Quotation
60	65	36	6	—	15	9	18	6	33	11	33	20	40	59	18	4.65				
68	70	43	6	5	18	11	22	6	36	13	38	24	40	65.5	21.5	4.65				
75	80	45	6	5	22	11	26	6	39	15	45	26	45	69.5	22.5	4.65				
81	95	54	6	5	27.5	11	30	6	41	17	51	30	55	76	27	4.65				

Part Number	Bolt hole dimensions											⑥ Lock nut	⑤ Adjust rod	Mounting position of stopper			
	Type	D	l1	l2	W1	B1	B2	B3	BM/BH	K	S1			e1	S2	e2	(A)
SCZA	12	42	21	45	6.6	11	—	—	M 8	28.5	6	17	19.6	12	13.9	0° ~ 10°	—
	16	46	25	48	6.6	11	15	—	M 8	29.5	6	21	24.2	16	18.5	0° ~ 10°	—
	20	50	25	55	8.6	13.5	—	—	M10	34.5	8	24	27.7	19	21.9	4° ~ 10°	0° ~ 3°
	25	60	35	62	8.6	13.5	20	—	M10	36.5	8	24	27.7	19	21.9	4° ~ 10°	0° ~ 3°
	30	75	50	68	8.6	13.5	—	—	M10	45.5	8	24	27.7	19	21.9	0° ~ 10°	—



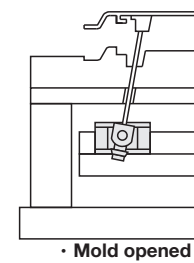
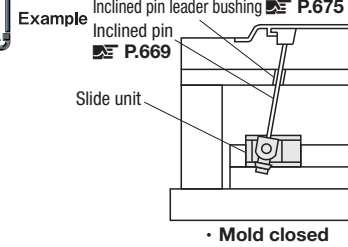
Order

Part Number — A°
SCZA20 — 5



Days to Ship

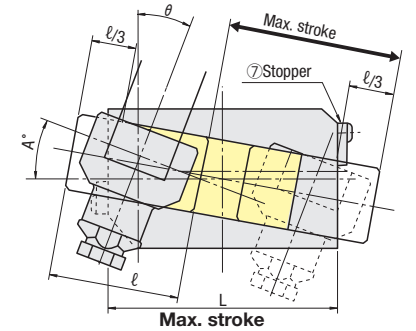
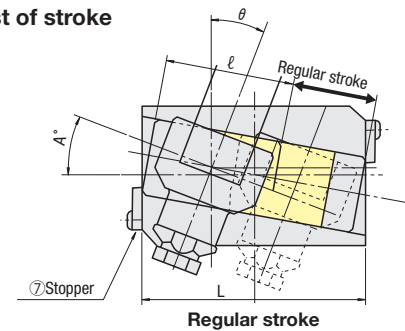
Quotation



■ Applicable inclined pin : Example of mounting dimension

D	D1	B	PM
12	11	13	M 5
16	15	14	M 8
20	18	16	M10
25	22	18	M10
30	27.5	20	M10

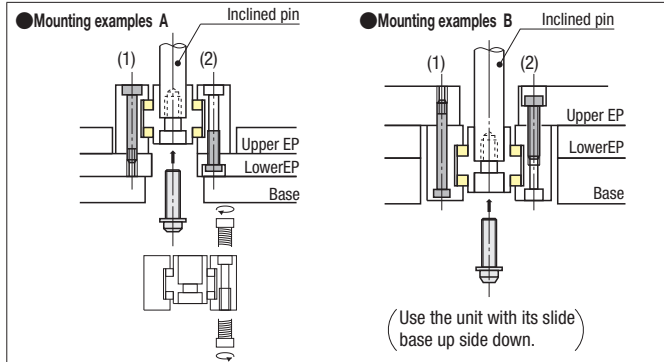
■ List of stroke



Part Number	Regular stroke										
	(Distance through which the slide plate moves to the end face of the slide base.)										
	A=0	A=1	A=2	A=3	A=4	A=5	A=6	A=7	A=8	A=9	A=10
SCZA12	20.0	19.6	19.3	19.0	18.7	18.4	18.2	17.9	17.7	17.5	17.3
SCZA16	25.0	24.6	24.3	24.0	23.7	23.4	23.2	23.0	22.8	22.6	22.4
SCZA20	30.0	29.5	29.2	28.8	28.4	28.1	27.8	27.5	27.3	27.0	26.8
SCZA25	35.0	34.5	34.1	33.7	33.3	33.0	32.7	32.4	32.1	31.8	31.6
SCZA30	40.0	39.4	39.0	38.5	38.1	37.7	37.3	37.0	36.7	36.4	36.1

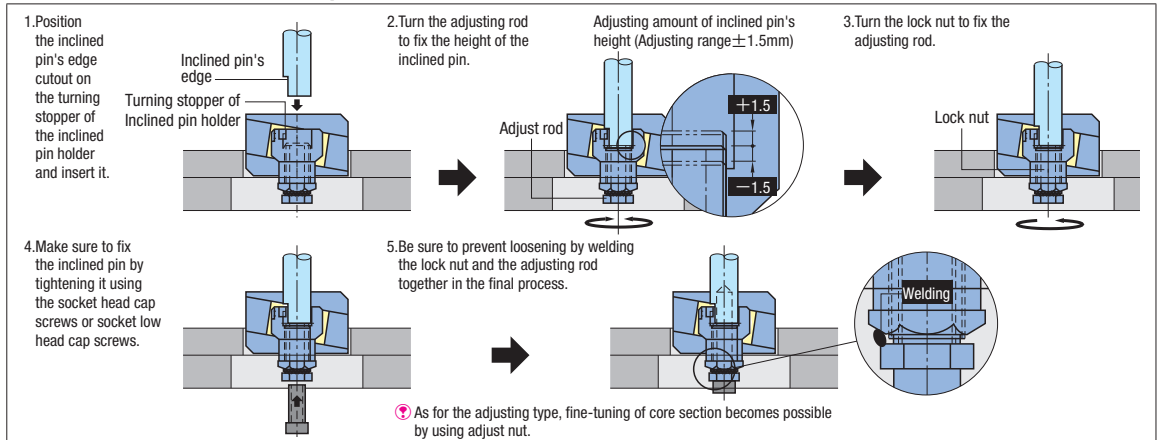
Part Number	Max. stroke when taking the stopper ⑦ off										
	(Standard stroke + $2l/3$; Note that this is the maximum value at which interference does not occur between the slide plate and the mounting face.)										
	A=0	A=1	A=2	A=3	A=4	A=5	A=6	A=7	A=8	A=9	A=10
SCZA12	43.3	42.9	42.6	42.3	42.0	41.7	41.5	41.2	41.0	40.8	40.6
SCZA16	51.6	51.3	51.0	50.7	50.4	50.1	49.9	49.6	49.4	49.3	49.1
SCZA20	56.6	56.2	55.8	55.5	55.1	54.8	54.5	54.2	53.9	53.7	53.5
SCZA25	65.0	64.5	64.1	63.7	63.3	63.0	62.7	62.4	62.1	61.8	61.6
SCZA30	76.6	76.1	75.6	75.2	74.8	74.4	74.0	73.6	73.3	73.0	72.8

■ Mounting examples



- Refer to the above table for dimensions of the inclined pin's edge cutout and screw size (PM). The counterbore on the inclined pin holder is made in a size that accommodates for a socket head cap screw with a spring washer.
- The unit can be mounted on an ejector plate in two ways : (1)Screwing into the ejector plate, or (2)Screwing into the unit. For (2) use a socket head cap screw that corresponds to BM in the Bolt hole dimensions table. For (1) select a rank below the corresponding BM (i.e., M6 screw when BM is M8).
- Prior to mounting, apply * grease to the unit in order to protect it from wear during initial running-in.
- If the stroke is long, it is recommended that you use a bushing that supports the inclined pin. P.675

■ How to mount the inclined pin



Ⓜ As for the adjusting type, fine-tuning of core section becomes possible by using adjust nut.