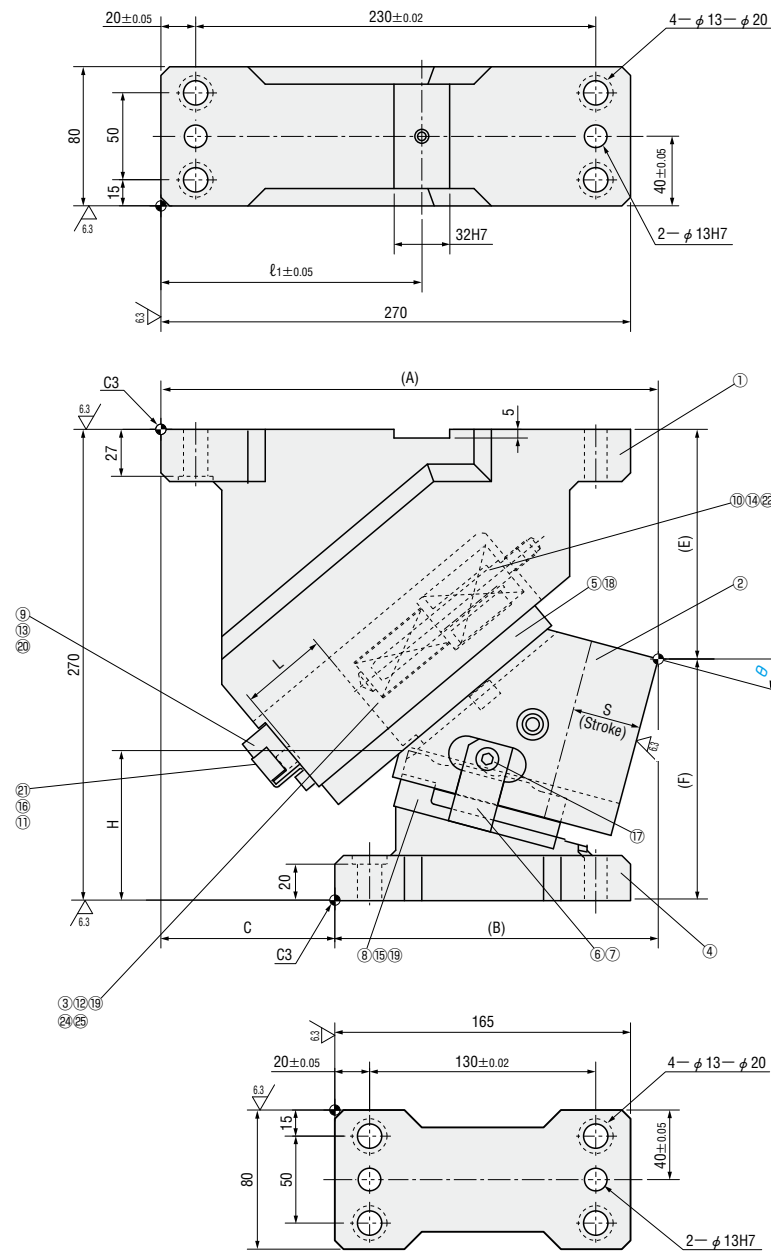


FLYING CAM UNITS FOR HEAVY LOAD PIERCE

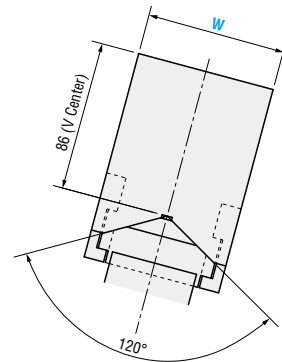
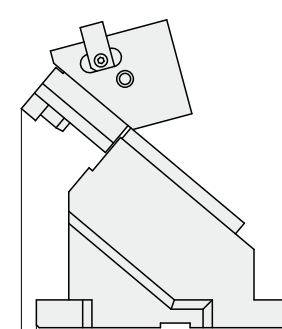
—MGFVS · MEVSN—



— With automatic alignment — **MGFVS80 (θ=00-60)**
 — Without automatic alignment — **MEVSN80 (θ=00-60)**
 (Economy type)



■ Rear removal space



■ Components table P.1190

W	θ	A	B	C	E	F	H	L	ℓ ₁	x	
80	00	260	160	100	99	171	83	50	130	12	
	05	272.93	172.93		109.39	160.61	83.8		150	170	17
	10	279.92	179.92		120.43	149.57	84.6				
	15	285.93	185.93		132.04	137.96	85.3				
	20	285.9	195.9	129.12	140.88	100.9					
	25	289.8	199.8	90	141.6	128.4	101.5		27	36	
	30	282.59	207.59	75	134.36	135.64	121.9				
	35	284.27	209.27	75	147.32	122.68	122.3				
	40	274.8	214.8	60	140.38	129.62	142.6				
	45	274.2	214.2	35	153.44	116.56	142.7		157.8	170	45
	50	262.46	227.46		151.39	118.61	157.8				
	55	259.6	224.6		164.14	105.86	157.8				
60	240.64	240.64	0		176.59	93.41	157.7				

Slide Stroke S	Working force KN (tonf)		Spring load N (kgf)			Total weight kg	Catalog No.	W	θ
	Standard working force	Max. working force	Preload	5mm before bottom dead center	Max. load				
32.1	54.9 (5.6)	109.8 (11.2)	123 (12.5)	1300(132.6)	3250 (331.4)	25.9	—With automatic alignment— MGFVS	80	00
38.4				1625(165.7)		26.3			05
38.9				1650(168.3)		26.6			10
39.7				1675(170.8)		25.1			15
46.1				1900(193.7)		25.3			20
47.8				1950(198.8)		25.3			25
54.3				2100(214.1)		23.2			30
57.4				2150(219.2)		23.4			35
64.3				2275(232.0)		22.4			40
69.6				2350(239.6)		22.4			45
77.8				2450(249.8)		21.6			50
87.2				2525(257.5)		21.7			55
98.5	2625(267.7)	23.2	60						

Order

Days to Ship

Price

Alterations (N12 · N16...etc.)

Alterations	Code	Spec.
	N12	Change dowel hole diameter φ 13H7 ⇒ φ 12H7
	N16	Change dowel hole diameter φ 13H7 ⇒ φ 16H7
	K	Add locating key (With 1 hexagon socket head cap screw M8×15)
	SC	Move forward mounting surface 0 ≤ SC ≤ 60 1mm increment
	WC	Change the width of mounting surface W=80 ⇒ W=100 or 120 Only 100 or 120 can be specified.

CAM UNITS & COMPONENTS