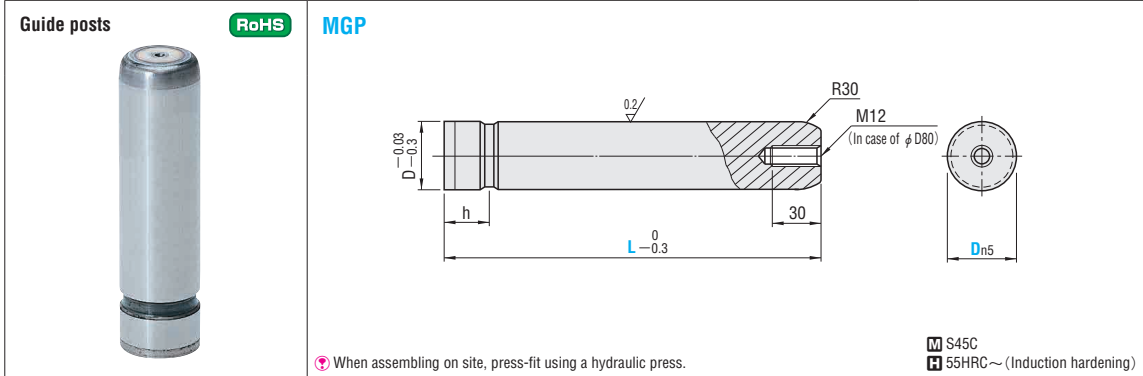


GUIDE POSTS / GUIDE HOLDERS / GUIDE BUSHINGS



When assembling on site, press-fit using a hydraulic press. S45C
55HRC~ (Induction hardening)

Dn5	h	Catalog No.		L	Base unit price 1~9 pieces
		Type	D		
20	+0.024 +0.015	15	MGP	20	80 90 100 110 120 130 140 150 160
				25	80 90 100 110 120 130 140 150 160 170 180 200
32	+0.028 +0.017	20	MGP	32	90 100 110 120 130 140 150 160 170 180 200 220 250
38				110 120 130 140 150 160 170 180 200 220 250 280 300	
50	+0.033 +0.020	32.5	MGP	50	160 170 180 200 220 250 280 300 350
60				180 200 220 250 280 300 350 400	
80	+0.033 +0.020	50	MGP	80	250 280 300 350 400 450

Quotation

Order Catalog No. — L
MGP 32 — 160
MGH 32

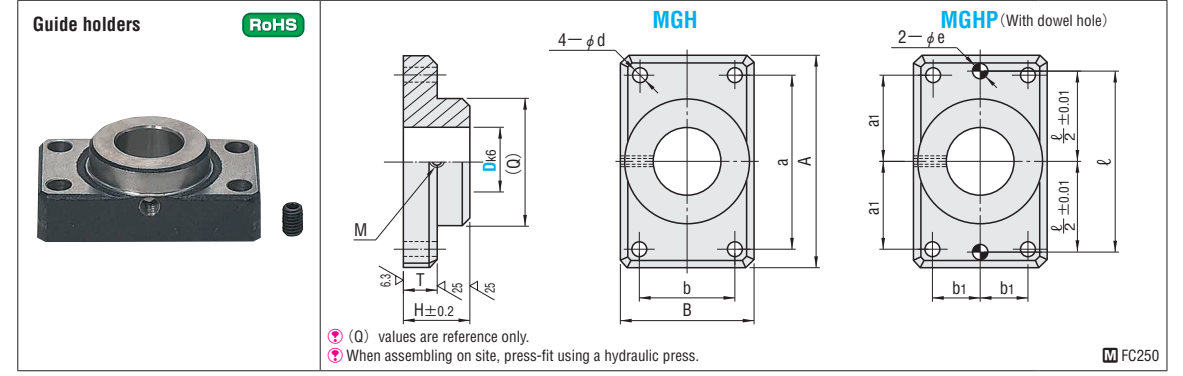
Price Quotation

Days to Ship Quotation

Alterations Catalog No. — L(LC) — (W·B...etc.)
MGP80 — LC290 — B Quotation

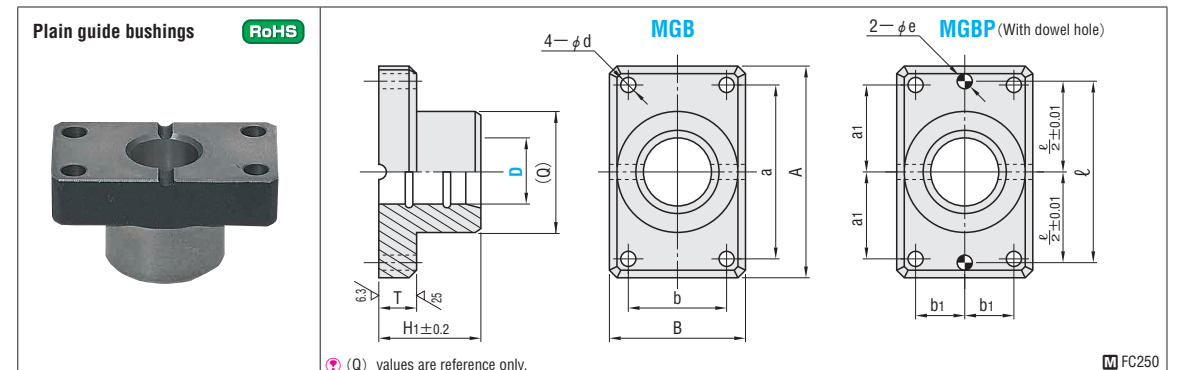
Alteration	Code	Spec.	D	1Code
	LC	Post length change LC < L 1mm increments Details of alteration P.944	20·25·32 38·50 60·80	Quotation
	Bushing W Holder M	Machining for mounting of a stroke end block Tap holes are machined for attaching a stroke end block. Cannot be used for D20. Details of alteration P.944	25·32 38·50 60·80 25~80	

Alteration	Code	Spec.	D	1Code
	Bushing B	Machining of flange for reversed bushing and/or holder orientation Use of the reversed bushing and/or holder allows the die height to be reduced. Alterations B and H can be combined at the same time. The post length is measured from the holder bottom. Details of alteration P.944	20·25·32 38·50 60·80	Quotation
	Holder H			
	Holder bottom			
	BK1	Bushing H ₁ dimension tolerance change H ₁ ± 0.2 ⇔ ± 0.1 Cannot be used for D20.	25·32 38·50 60·80	
	HK1	Holder H dimension tolerance change H ± 0.2 ⇔ ± 0.1 Cannot be used for D20.	25·32 38·50 60·80	

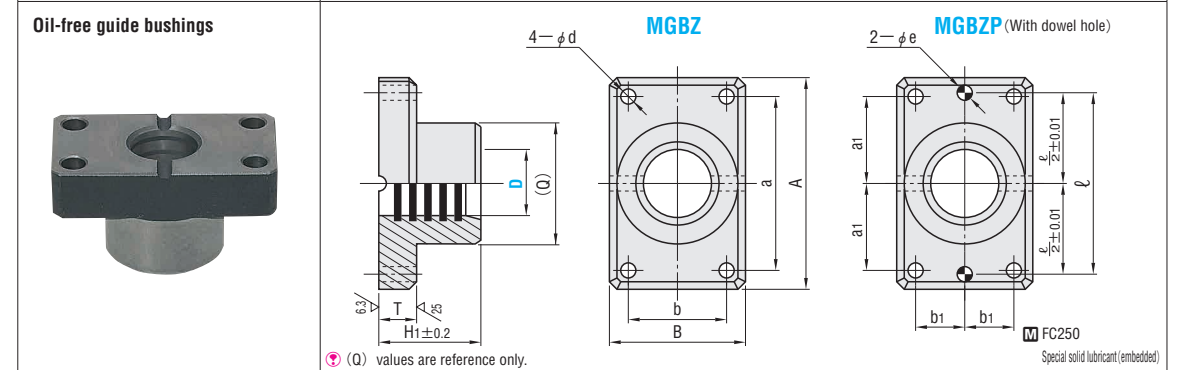


(Q) values are reference only. When assembling on site, press-fit using a hydraulic press. FC250

Catalog No. Type	Dn5	A	B	a	b	d	H	T	(Q)	M	eH7	ℓ	a ₁	b ₁	Base unit price 1~9 pieces		
															MGH	MGHP	
MGH	20	+0.002 -0.011	74	44	56	30	6.6	30	15	42	8	6	+0.012 0	56	28	15	
	25	84	48	66	30	9	30	20	46	66				33	15		
MGHP	32	+0.003 -0.013	100	58	76	36	11	40	20	56	10	8	+0.015 0	76	38	18	Quotation
	38		130	75	100	44	11	50	25	73				100	50	22	
	50		155	90	125	60	14	65	25	87				125	62.5	30	
	60		+0.004 -0.014	190	120	150	80	18	75	30				116	150	75	
80	230	150	180	110	22	100	35	145	16	16	+0.018 0	190	90	55			



(Q) values are reference only. FC250



(Q) values are reference only. FC250
Special solid lubricant (embedded)

Catalog No. Type	D	A	B	a	b	d	H ₁	T	(Q)	eH7	ℓ	a ₁	b ₁	Base unit price 1~9 pieces			
														MGB	MGBP	MGBZ	MGBZP
MGB	20	+0.041 +0.031	74	44	56	30	6.6	40	15	42	8	6	+0.012 0	56	28	15	
	25	84	48	66	30	9	45	20	46	66				33	15		
MGBP	32	+0.047 +0.037 +0.037 +0.037	100	58	76	36	11	50	20	56	10	8	+0.015 0	76	38	18	Quotation
	38		130	75	100	44	11	60	25	73				100	50	22	
	50		155	90	125	60	14	85	25	87				125	62.5	30	
	60		+0.052 +0.037	190	120	150	80	18	100	30				116	150	75	
80	+0.061 +0.043 +0.043	230	150	180	110	22	130	35	145	16	16	+0.018 0	190	90	55		